

For Research Use Only

MYLK3 Polyclonal antibody

Catalog Number: 21527-1-AP **2 Publications**



Basic Information

Catalog Number: 21527-1-AP	GenBank Accession Number: BC109097	Purification Method: Antigen affinity purification
Size: 400 µg/ml	GeneID (NCBI): 91807	Recommended Dilutions: WB 1:500-1:3000 IHC 1:20-1:200 IF 1:50-1:500
Source: Rabbit	UNIPROT ID: Q32MK0	
Isotype: IgG	Full Name: myosin light chain kinase 3	
Immunogen Catalog Number: AG16137	Calculated MW: 819 aa, 88 kDa	
	Observed MW: 85-100 kDa	

Applications

Tested Applications: IF/ICC, IHC, WB, ELISA	Positive Controls:
Cited Applications: WB, IF, IHC	WB : mouse heart tissue, human heart tissue, rat heart tissue
Species Specificity: human, mouse, rat	IHC : human colon tissue, human heart tissue
Cited Species: human, rat, mouse	IF : HepG2 cells,
Note-IHC: <i>suggested antigen retrieval with TE buffer pH 9.0; (*) Alternatively, antigen retrieval may be performed with citrate buffer pH 6.0</i>	

Background Information

Notable Publications

Author	Pubmed ID	Journal	Application
Alzbeta Hulikova	35357563	Basic Res Cardiol	WB
Jia Mao	37723567	Cell Commun Signal	IHC,WB,IF

Storage

Storage:
Store at -20°C. Stable for one year after shipment.
Storage Buffer:
PBS with 0.02% sodium azide and 50% glycerol pH 7.3.
Aliquoting is unnecessary for -20°C storage

For technical support and original validation data for this product please contact:

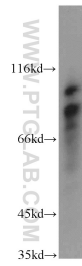
T: 4006900926

E: Proteintech-CN@ptglab.com

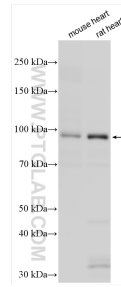
W: ptgcn.com

This product is exclusively available under Proteintech Group brand and is not available to purchase from any other manufacturer.

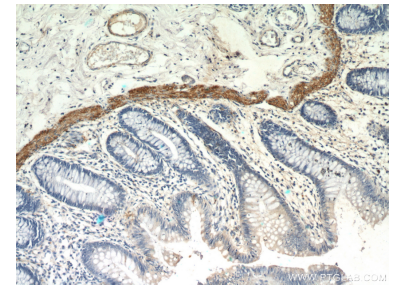
Selected Validation Data



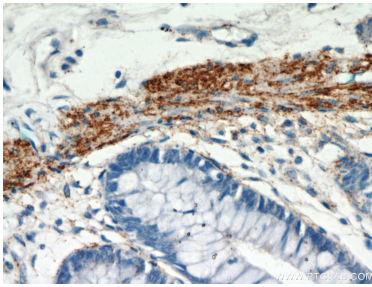
human heart tissue were subjected to SDS PAGE followed by western blot with 21527-1-AP (MYLK3 antibody) at dilution of 1:500 incubated at room temperature for 1.5 hours.



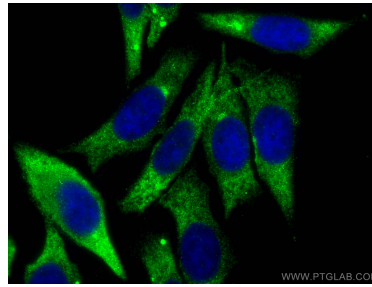
Various lysates were subjected to SDS PAGE followed by western blot with 21527-1-AP (MYLK3 antibody) at dilution of 1:1500 incubated at room temperature for 1.5 hours.



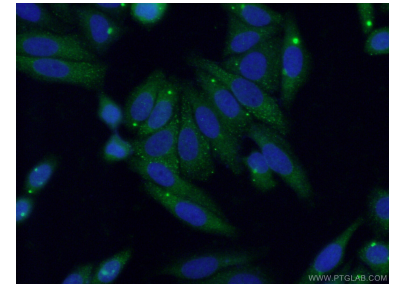
Immunohistochemical analysis of paraffin-embedded human colon using 21527-1-AP (MYLK3 antibody) at dilution of 1:100 (under 10x lens).



Immunohistochemical analysis of paraffin-embedded human colon using 21527-1-AP (MYLK3 antibody) at dilution of 1:100 (under 40x lens).



Immunofluorescent analysis of (-20°C Ethanol) fixed HepG2 cells using MYLK3 antibody (21527-1-AP) at dilution of 1:200 and CoraLite®488-Conjugated AffiniPure Goat Anti-Rabbit IgG(H+L).



Immunofluorescent analysis of (-20°C Ethanol) fixed HepG2 cells using 21527-1-AP (MYLK3 antibody) at dilution of 1:50 and Alexa Fluor 488-conjugated AffiniPure Goat Anti-Rabbit IgG(H+L).