

# C1orf106 Polyclonal antibody

Catalog Number: 21506-1-AP

## Basic Information

**Catalog Number:**

21506-1-AP

**Size:**

450 µg/ml

**Source:**

Rabbit

**Isotype:**

IgG

**Immunogen Catalog Number:**

AG15987

**GenBank Accession Number:**

BC106877

**GeneID (NCBI):**

55765

**UNIPROT ID:**

Q3KP66

**Full Name:**

chromosome 1 open reading frame 106

**Calculated MW:**

663 aa, 73 kDa

**Observed MW:**

70-73 kDa

**Purification Method:**

Antigen affinity purification

**Recommended Dilutions:**

WB 1:500-1:2000

IP 0.5-4.0 µg for 1.0-3.0 mg of total protein lysate

IHC 1:50-1:500

IF/ICC 1:10-1:100

## Applications

**Tested Applications:**

WB, IHC, IF/ICC, IP, ELISA

**Species Specificity:**

human, mouse, rat

**Note-IHC: suggested antigen retrieval with TE buffer pH 9.0; (\*) Alternatively, antigen retrieval may be performed with citrate buffer pH 6.0**

**Positive Controls:**

WB: mouse kidney tissue, HEK-293 cells, rat kidney tissue

IP: mouse kidney tissue,

IHC: mouse kidney tissue,

IF/ICC: HEK-293 cells, HeLa cells

## Background Information

C1orf106 (also known as innate immunity activator, INAVA) has thus far been considered to play a significant role in intestinal inflammatory diseases. C1orf106 is highly expressed in the human intestine and intestinal epithelial cell lines but expressed at low levels in myeloid cells and mouse bone marrow-derived macrophages (PMID: 29420262). Recent studies have also shown that C1orf106 protects against colitis by stabilizing E-cadherin and bridges mucosal barrier function with inflammatory signaling (PMID: 31376015).

## Storage

**Storage:**

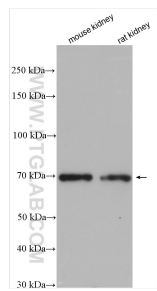
Store at -20°C. Stable for one year after shipment.

**Storage Buffer:**

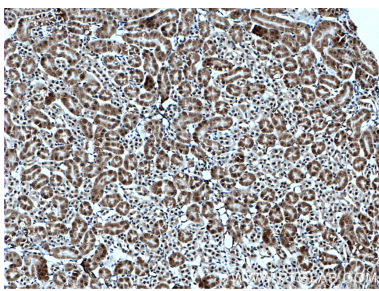
PBS with 0.02% sodium azide and 50% glycerol pH 7.3.

Aliquoting is unnecessary for -20°C storage

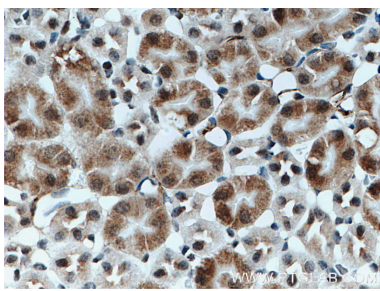
Selected Validation Data



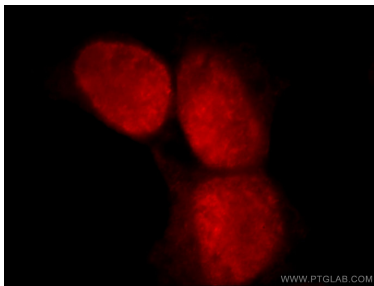
Various lysates were subjected to SDS PAGE followed by western blot with 21506-1-AP (C1orf106 antibody) at dilution of 1:1000 incubated at room temperature for 1.5 hours.



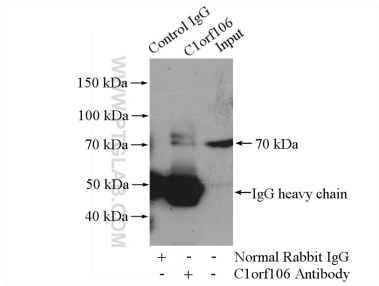
Immunohistochemical analysis of paraffin-embedded mouse kidney tissue slide using 21506-1-AP (C1orf106 antibody) at dilution of 1:200 (under 10x lens. Heat mediated antigen retrieval with Tris-EDTA buffer (pH 9.0).



Immunohistochemical analysis of paraffin-embedded mouse kidney tissue slide using 21506-1-AP (C1orf106 antibody) at dilution of 1:200 (under 40x lens. Heat mediated antigen retrieval with Tris-EDTA buffer (pH 9.0).



Immunofluorescent analysis of HEK-293 cells, using C1orf106 antibody 21506-1-AP at 1:25 dilution and Rhodamine-labeled goat anti-rabbit IgG (red).



IP result of anti-C1orf106 (IP:21506-1-AP, 4ug; Detection:21506-1-AP 1:500) with mouse kidney tissue lysate 4800ug.