

# SH3D19 Polyclonal antibody

Catalog Number: 21499-1-AP

## Basic Information

**Catalog Number:**

21499-1-AP

**Size:**

500 µg/ml

**Source:**

Rabbit

**Isotype:**

IgG

**Immunogen Catalog Number:**

AG15915

**GenBank Accession Number:**

BC108890

**GeneID (NCBI):**

152503

**UNIPROT ID:**

Q5HYK7

**Full Name:**

SH3 domain containing 19

**Calculated MW:**

790 aa, 87 kDa

**Observed MW:**

45-47 kDa

**Purification Method:**

Antigen affinity purification

**Recommended Dilutions:**

WB 1:500-1:2000

IHC 1:20-1:200

IF/ICC 1:10-1:100

## Applications

**Tested Applications:**

WB, IHC, IF/ICC, ELISA

**Species Specificity:**

human, mouse, rat

**Note-IHC: suggested antigen retrieval with TE buffer pH 9.0; (\*) Alternatively, antigen retrieval may be performed with citrate buffer pH 6.0**

**Positive Controls:**

WB : HT-1080 cells, Y79 cells

IHC : human heart tissue, human kidney tissue

IF/ICC : HepG2 cells, Hela cells

## Background Information

### Storage

**Storage:**

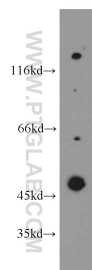
Store at -20°C. Stable for one year after shipment.

**Storage Buffer:**

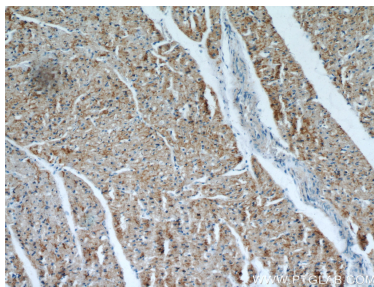
PBS with 0.02% sodium azide and 50% glycerol pH 7.3.

Aliquoting is unnecessary for -20°C storage

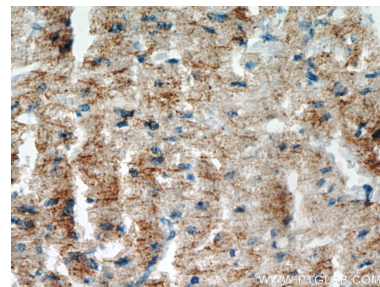
## Selected Validation Data



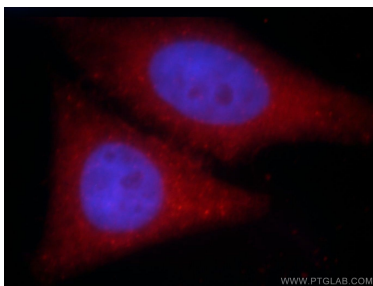
HT-1080 cells were subjected to SDS PAGE followed by western blot with 21499-1-AP (SH3D19 antibody) at dilution of 1:500 incubated at room temperature for 1.5 hours.



Immunohistochemical analysis of paraffin-embedded human heart using 21499-1-AP (SH3D19 antibody) at dilution of 1:50 (under 10x lens).



Immunohistochemical analysis of paraffin-embedded human heart using 21499-1-AP (SH3D19 antibody) at dilution of 1:50 (under 40x lens).



Immunofluorescent analysis of HepG2 cells, using SH3D19 antibody 21499-1-AP at 1:25 dilution and Rhodamine-labeled goat anti-rabbit IgG (red). Blue pseudocolor = DAPI (fluorescent DNA dye).