

For Research Use Only

NEBL Polyclonal antibody

Catalog Number: 21497-1-AP



Basic Information

| | | |
|---|--|--|
| Catalog Number: 21497-1-AP | GenBank Accession Number: BC110453 | Purification Method: Antigen affinity purification |
| Size: 250 µg/ml | GeneID (NCBI): 10529 | Recommended Dilutions: WB 1:20000-1:100000 IHC 1:500-1:2000 |
| Source: Rabbit | UNIPROT ID: O76041 | |
| Isotype: IgG | Full Name: nebullette | |
| Immunogen Catalog Number: AG15882 | Calculated MW: 1014 aa, 116 kDa | |
| | Observed MW: 116 kDa | |

Applications

Tested Applications:

IHC, WB, ELISA

Species Specificity:

human, mouse, rat

Note-IHC: suggested antigen retrieval with TE buffer pH 9.0; (*) Alternatively, antigen retrieval may be performed with citrate buffer pH 6.0

Positive Controls:

WB : mouse heart tissue, rat heart tissue

IHC : mouse heart tissue,

Background Information

Nebulette, also known as NEBL, is a cardiac-specific isoform belonging to the nebulin family of proteins. Nebulette has 23 modular repeat structures of 35 amino acid residues each. Nebulette has an acidic region with unknown structure at its N-terminus, and a serine-rich region adjacent to an SH3 domain at its C-terminus (PMID: 2037050, 20951588). Nebulette functionally links sarcomeric actin to the desmin intermediate filaments in the heart muscle sarcomeres (PubMed:27733623). Nebulette is abundantly expressed in cardiac muscle at Z-disc regions, but not in skeletal or smooth muscle.

Storage

Storage:

Store at -20°C. Stable for one year after shipment.

Storage Buffer:

PBS with 0.02% sodium azide and 50% glycerol pH 7.3.

Aliquoting is unnecessary for -20°C storage

For technical support and original validation data for this product please contact:

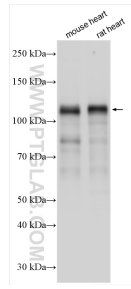
T: 4006900926

E: Proteintech-CN@ptglab.com

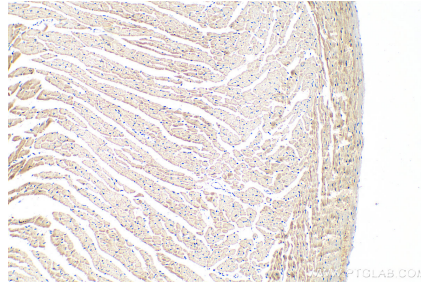
W: ptgcn.com

This product is exclusively available under Proteintech Group brand and is not available to purchase from any other manufacturer.

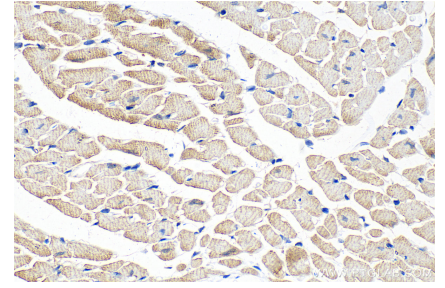
Selected Validation Data



Various lysates were subjected to SDS PAGE followed by western blot with 21497-1-AP (NEBL antibody) at dilution of 1:60000 incubated at room temperature for 1.5 hours.



Immunohistochemical analysis of paraffin-embedded mouse heart tissue slide using 21497-1-AP (NEBL antibody) at dilution of 1:1000 (under 10x lens). Heat mediated antigen retrieval with Tris-EDTA buffer (pH 9.0).



Immunohistochemical analysis of paraffin-embedded mouse heart tissue slide using 21497-1-AP (NEBL antibody) at dilution of 1:1000 (under 40x lens). Heat mediated antigen retrieval with Tris-EDTA buffer (pH 9.0).