

C20orf160 Polyclonal antibody

Catalog Number: 21493-1-AP

Basic Information

Catalog Number:

21493-1-AP

Size:

400 µg/ml

Source:

Rabbit

Isotype:

IgG

Immunogen Catalog Number:

AG15841

GenBank Accession Number:

BC030254

GeneID (NCBI):

140706

UNIPROT ID:

Q9NUG4

Full Name:

chromosome 20 open reading frame
160

Calculated MW:

571 aa, 62 kDa

Observed MW:

52 kDa

Purification Method:

Antigen affinity purification

Recommended Dilutions:

WB 1:200-1:1000

IHC 1:50-1:500

Applications

Tested Applications:

IHC, WB, ELISA

Species Specificity:

human, mouse, rat

Note-IHC: suggested antigen retrieval with **TE buffer pH 9.0; (*) Alternatively, antigen retrieval may be performed with citrate buffer pH 6.0**

Positive Controls:

WB : A431 cells, human placenta tissue

IHC : human heart tissue,

Background Information

Storage

Storage:

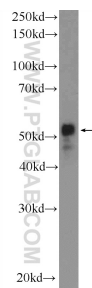
Store at -20°C. Stable for one year after shipment.

Storage Buffer:

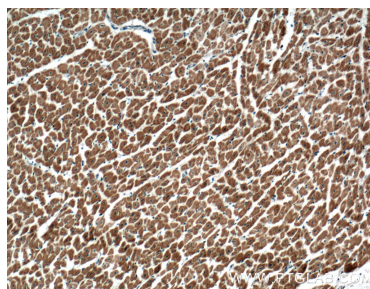
PBS with 0.02% sodium azide and 50% glycerol pH 7.3.

Aliquoting is unnecessary for -20°C storage

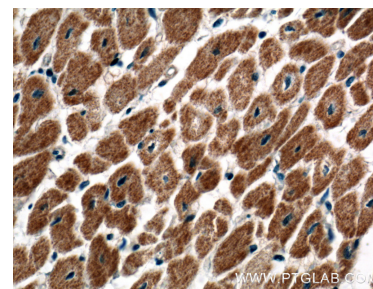
Selected Validation Data



A431 cells were subjected to SDS PAGE followed by western blot with 21493-1-AP (C20orf160 Antibody) at dilution of 1:300 incubated at room temperature for 1.5 hours.



Immunohistochemical analysis of paraffin-embedded human heart tissue slide using 21493-1-AP (C20orf160 Antibody) at dilution of 1:200 (under 10x lens).



Immunohistochemical analysis of paraffin-embedded human heart tissue slide using 21493-1-AP (C20orf160 Antibody) at dilution of 1:200 (under 40x lens).