

For Research Use Only

VANGL2 Polyclonal antibody, PBS Only

Catalog Number: 21492-1-PBS

Featured Product



Basic Information

Catalog Number:

21492-1-PBS

Source:

Rabbit

Isotype:

IgG

Immunogen Catalog Number:

AG15833

GenBank Accession Number:

BC103920

GeneID (NCBI):

57216

UNIPROT ID:

Q9ULK5

Full Name:

vang-like 2 (van gogh, Drosophila)

Calculated MW:

521 aa, 60 kDa

Observed MW:

60-70 kDa

Purification Method:

Antigen affinity purification

Applications

Tested Applications:

WB, IHC, IP, Indirect ELISA

Species Specificity:

human, mouse, rat

Background Information

Vangl2 is a key component of the planar cell polarity (PCP) pathway. Vangl2 is tightly associated with the postsynaptic density (PSD) fraction and forms a protein complex with PSD-95 and NMDA receptors. Vangl2 directly binds to the third PDZ domain of PSD-95 via its C-terminal TSV motif. Vangl2 directly binds to N-cadherin.

Storage

Storage:

Store at -80°C.

The product is shipped with ice packs. Upon receipt, store it immediately at -80°C

Storage Buffer:

PBS only, pH7.3

For technical support and original validation data for this product please contact:

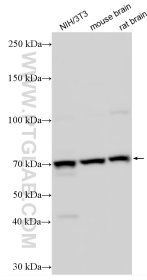
T: 4006900926

E: Proteintech-CN@ptglab.com

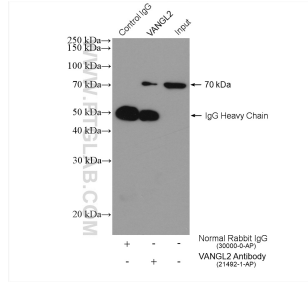
W: ptgcn.com

This product is exclusively available under Proteintech Group brand and is not available to purchase from any other manufacturer.

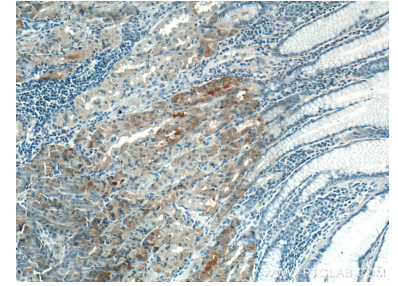
Selected Validation Data



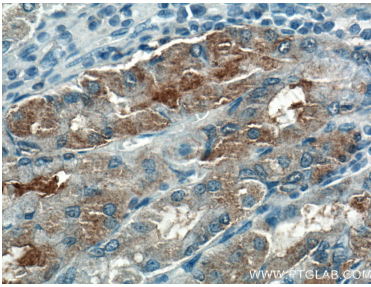
Various lysates were subjected to SDS PAGE followed by western blot with 21492-1-AP (VANGL2 antibody) at dilution of 1:3000 incubated at room temperature for 1.5 hours. This data was developed using the same antibody clone with 21492-1-PBS in a different storage buffer formulation.



IP result of anti-VANGL2 (IP:21492-1-AP, 4ug; Detection:21492-1-AP 1:500) with HepG2 cells lysate 1880 ug. This data was developed using the same antibody clone with 21492-1-PBS in a different storage buffer formulation.



Immunohistochemical analysis of paraffin-embedded human stomach tissue slide using 21492-1-AP (VANGL2 antibody) at dilution of 1:200 (under 10x lens). This data was developed using the same antibody clone with 21492-1-PBS in a different storage buffer formulation.



Immunohistochemical analysis of paraffin-embedded human stomach tissue slide using 21492-1-AP (VANGL2 antibody) at dilution of 1:200 (under 40x lens). This data was developed using the same antibody clone with 21492-1-PBS in a different storage buffer formulation.