

For Research Use Only

# MAGEC3 Polyclonal antibody

Catalog Number: 21491-1-AP

2 Publications



## Basic Information

Catalog Number:

21491-1-AP

Size:

300 µg/ml

Source:

Rabbit

Isotype:

IgG

Immunogen Catalog Number:

AG15819

GenBank Accession Number:

BC103893

GeneID (NCBI):

139081

UNIPROT ID:

Q8TD91

Full Name:

melanoma antigen family C, 3

Calculated MW:

643 aa, 72 kDa

Observed MW:

70-72 kDa

Purification Method:

Antigen affinity purification

Recommended Dilutions:

WB 1:500-1:1000

IHC 1:20-1:200

IF/ICC 1:20-1:200

## Applications

Tested Applications:

WB, IHC, IF/ICC, ELISA

Cited Applications:

WB, IP

Species Specificity:

human, mouse

Cited Species:

human

**Note-IHC: suggested antigen retrieval with TE buffer pH 9.0; (\*) Alternatively, antigen retrieval may be performed with citrate buffer pH 6.0**

Positive Controls:

WB : A375 cells, mouse thymus tissue

IHC : human liver cancer tissue,

IF/ICC : A375 cells,

## Background Information

### Notable Publications

Author	Pubmed ID	Journal	Application
Xiao Song	30309319	BMC Cancer	WB
Qingnan Wu	34347390	Cancer Commun (Lond)	IP

## Storage

Storage:

Store at -20°C. Stable for one year after shipment.

Storage Buffer:

PBS with 0.02% sodium azide and 50% glycerol pH 7.3.

Aliquoting is unnecessary for -20°C storage

For technical support and original validation data for this product please contact:

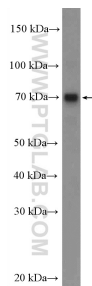
T: 4006900926

E: Proteintech-CN@ptglab.com

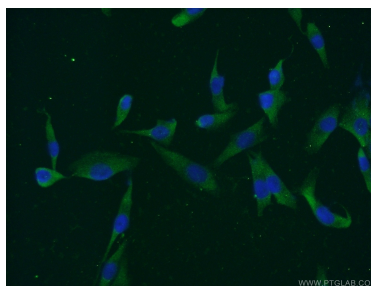
W: ptgcn.com

This product is exclusively available under Proteintech Group brand and is not available to purchase from any other manufacturer.

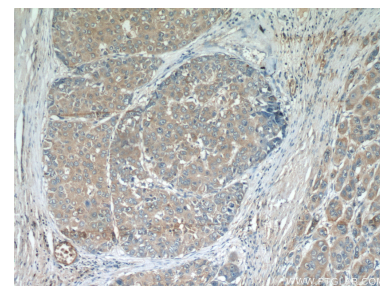
## Selected Validation Data



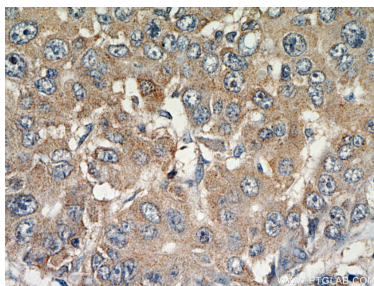
A375 cells were subjected to SDS PAGE followed by western blot with 21491-1-AP (MAGEC3 Antibody) at dilution of 1:600 incubated at room temperature for 1.5 hours.



Immunofluorescent analysis of A375 cells using 21491-1-AP (MAGEC3 antibody) at dilution of 1:50 and Alexa Fluor 488-conjugated AffiniPure Goat Anti-Rabbit IgG(H+L).



Immunohistochemical analysis of paraffin-embedded human liver cancer using 21491-1-AP (MAGEC3 antibody) at dilution of 1:50 (under 10x lens).



Immunohistochemical analysis of paraffin-embedded human liver cancer using 21491-1-AP (MAGEC3 antibody) at dilution of 1:50 (under 40x lens).