

For Research Use Only

CHIA Polyclonal antibody

Catalog Number: 21484-1-AP **3 Publications**



Basic Information

Catalog Number: 21484-1-AP	GenBank Accession Number: BC036339	Purification Method: Antigen affinity purification
Size: 300 µg/ml	GeneID (NCBI): 27159	Recommended Dilutions: WB 1:500-1:1000 IHC 1:20-1:200 IF 1:10-1:100
Source: Rabbit	UNIPROT ID: Q9BZP6	
Isotype: IgG	Full Name: chitinase, acidic	
Immunogen Catalog Number: AG15767	Calculated MW: 476 aa, 52 kDa	
	Observed MW: 52 kDa	

Applications

Tested Applications: IF/ICC, IHC, WB, ELISA	Positive Controls: WB : mouse lung tissue, IHC : human stomach tissue, human lung tissue IF : HepG2 cells, Hela cells
Cited Applications: WB, IF	
Species Specificity: human, mouse, rat	
Cited Species: human, mouse	
Note-IHC: suggested antigen retrieval with TE buffer pH 9.0; (*) Alternatively, antigen retrieval may be performed with citrate buffer pH 6.0	

Background Information

Notable Publications

Author	Pubmed ID	Journal	Application
Steven de Jesus Carrion	30903663	Eur J Immunol	WB, IF
Lei Zhao	35096968	Front Mol Biosci	WB
Daisuke Shiokawa	37985874	Commun Biol	IF

Storage

Storage:
Store at -20°C. Stable for one year after shipment.
Storage Buffer:
PBS with 0.02% sodium azide and 50% glycerol pH 7.3.
Aliquoting is unnecessary for -20°C storage

For technical support and original validation data for this product please contact:

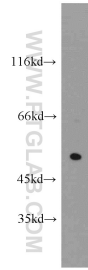
T: 4006900926

E: Proteintech-CN@ptglab.com

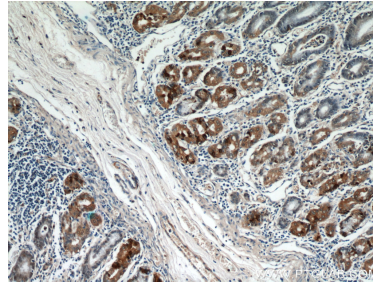
W: ptgcn.com

This product is exclusively available under Proteintech Group brand and is not available to purchase from any other manufacturer.

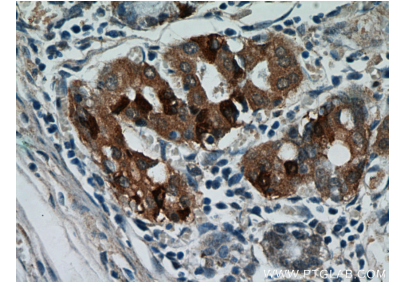
Selected Validation Data



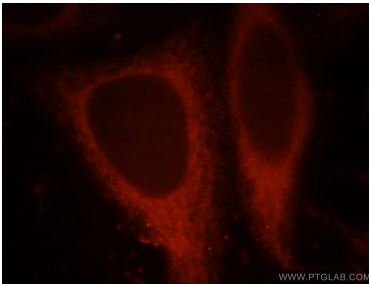
mouse lung tissue were subjected to SDS PAGE followed by western blot with 21484-1-AP (CHIA antibody) at dilution of 1:500 incubated at room temperature for 1.5 hours.



Immunohistochemical analysis of paraffin-embedded human stomach using 21484-1-AP (CHIA antibody) at dilution of 1:50 (under 10x lens).



Immunohistochemical analysis of paraffin-embedded human stomach using 21484-1-AP (CHIA antibody) at dilution of 1:50 (under 40x lens).



Immunofluorescent analysis of HepG2 cells, using CHIA antibody 21484-1-AP at 1:25 dilution and Rhodamine-labeled goat anti-rabbit IgG (red).