

For Research Use Only

SYNPO2L Polyclonal antibody

Catalog Number: 21480-1-AP

1 Publications



Basic Information

Catalog Number:

21480-1-AP

Size:

450 µg/ml

Source:

Rabbit

Isotype:

IgG

Immunogen Catalog Number:

AG15683

GenBank Accession Number:

BC142635

GeneID (NCBI):

79933

UNIPROT ID:

Q9H987

Full Name:

synaptopodin 2-like

Calculated MW:

977 aa, 102 kDa

Observed MW:

79 kDa

Purification Method:

Antigen affinity purification

Recommended Dilutions:

WB 1:500-1:3000

IHC 1:50-1:500

IF/ICC 1:200-1:800

Applications

Tested Applications:

WB, IHC, IF/ICC, ELISA

Cited Applications:

IF

Species Specificity:

human, mouse, rat

Cited Species:

mouse

Note-IHC: suggested antigen retrieval with TE buffer pH 9.0; (*) Alternatively, antigen retrieval may be performed with citrate buffer pH 6.0

Positive Controls:

WB : mouse testis tissue, PC-3 cells, rat testis tissue

IHC : mouse heart tissue,

IF/ICC : HepG2 cells,

Background Information

SYNPO2L belongs to the synaptopodin family and is an actin-associated protein that may play a role in modulating actin-based shape. SYNPO2L is involved in the positive regulation of Rho protein signal transduction and the positive regulation of stress fiber assembly. Loss-of-function variants in the SYNPO2L gene are associated with atrial fibrillation (PMID: 33768119).

Notable Publications

Author	Pubmed ID	Journal	Application
Hiroshi Yamada	39195263	Cells	IF

Storage

Storage:

Store at -20°C. Stable for one year after shipment.

Storage Buffer:

PBS with 0.02% sodium azide and 50% glycerol pH 7.3.

Aliquoting is unnecessary for -20°C storage

For technical support and original validation data for this product please contact:

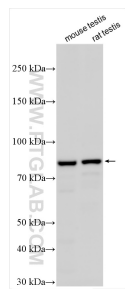
T: 4006900926

E: Proteintech-CN@ptglab.com

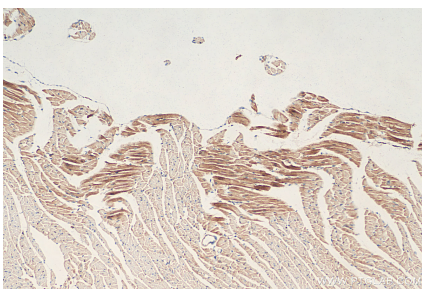
W: ptgcn.com

This product is exclusively available under Proteintech Group brand and is not available to purchase from any other manufacturer.

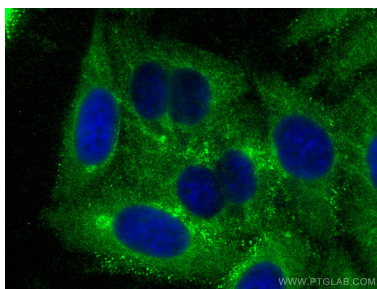
Selected Validation Data



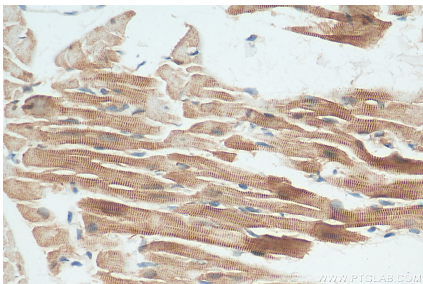
Various lysates were subjected to SDS PAGE followed by western blot with 21480-1-AP (SYNPO2L antibody) at dilution of 1:1500 incubated at room temperature for 1.5 hours.



Immunohistochemical analysis of paraffin-embedded mouse heart tissue slide using 21480-1-AP (SYNPO2L antibody) at dilution of 1:200 (under 10x lens). Heat mediated antigen retrieval with Tris-EDTA buffer (pH 9.0).



Immunofluorescent analysis of (-20°C Ethanol) fixed HepG2 cells using SYNPO2L antibody (21480-1-AP) at dilution of 1:400 and CoraLite®488-Conjugated Goat Anti-Rabbit IgG(H+L).



Immunohistochemical analysis of paraffin-embedded mouse heart tissue slide using 21480-1-AP (SYNPO2L antibody) at dilution of 1:200 (under 40x lens). Heat mediated antigen retrieval with Tris-EDTA buffer (pH 9.0).