

For Research Use Only

XRCC1 Polyclonal antibody

Catalog Number: 21468-1-AP

Featured Product

10 Publications



Basic Information

Catalog Number:

21468-1-AP

Size:

350 µg/ml

Source:

Rabbit

Isotype:

IgG

Immunogen Catalog Number:

AG15172

GenBank Accession Number:

BC023593

GeneID (NCBI):

7515

UNIPROT ID:

P18887

Full Name:

X-ray repair complementing defective repair in Chinese hamster cells 1

Calculated MW:

633 aa, 70 kDa

Observed MW:

80-90 kDa

Purification Method:

Antigen affinity purification

Recommended Dilutions:

WB 1:2000-1:12000

IF 1:50-1:500

Applications

Tested Applications:

IF/ICC, WB, ELISA

Cited Applications:

WB, IHC

Species Specificity:

human, mouse

Cited Species:

human, mouse

Positive Controls:

WB : HEK-293 cells, Jurkat cells, K-562 cells, HeLa cells

IF : HeLa cells,

Background Information

Notable Publications

Author	Pubmed ID	Journal	Application
Mingming Yang	35648484	Nucleic Acids Res	WB
Hui Dong	25818601	Toxicol Appl Pharmacol	WB
Xingjie Gao	31338966	J Cell Mol Med	WB

Storage

Storage:

Store at -20°C. Stable for one year after shipment.

Storage Buffer:

PBS with 0.02% sodium azide and 50% glycerol pH 7.3.

Aliquoting is unnecessary for -20°C storage

For technical support and original validation data for this product please contact:

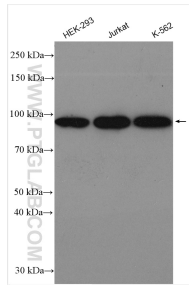
T: 4006900926

E: Proteintech-CN@ptglab.com

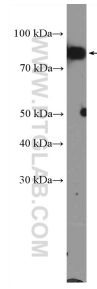
W: ptgcn.com

This product is exclusively available under Proteintech Group brand and is not available to purchase from any other manufacturer.

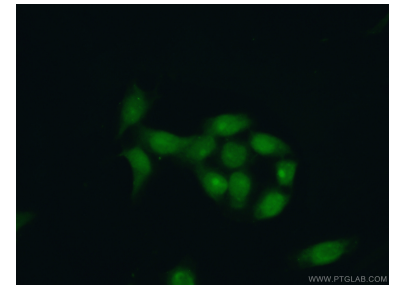
Selected Validation Data



Various lysates were subjected to SDS PAGE followed by western blot with 21468-1-AP (XRCC1 antibody) at dilution of 1:6000 incubated at room temperature for 1.5 hours.



K-562 cells were subjected to SDS PAGE followed by western blot with 21468-1-AP (XRCC1 Antibody) at dilution of 1:600 incubated at room temperature for 1.5 hours.



Immunofluorescent analysis of (4% PFA) fixed HeLa cells using 21468-1-AP (XRCC1 antibody) at dilution of 1:50 and Alexa Fluor 488-conjugated AffiniPure Goat Anti-Rabbit IgG(H+L).