

# TMEM230 Polyclonal antibody

Catalog Number: 21466-1-AP

5 Publications

## Basic Information

## Catalog Number:

21466-1-AP

## Size:

350 µg/ml

## Source:

Rabbit

## Isotype:

IgG

## Immunogen Catalog Number:

AG15080

## GenBank Accession Number:

BC011990

## GeneID (NCBI):

29058

## UNIPROT ID:

Q96A57

## Full Name:

chromosome 20 open reading frame  
30

## Calculated MW:

183 aa, 20 kDa

## Observed MW:

13 kDa

## Purification Method:

Antigen affinity purification

## Recommended Dilutions:

WB 1:1000-1:4000

IHC 1:50-1:500

## Applications

## Tested Applications:

IHC, WB, ELISA

## Cited Applications:

WB, IF, IHC

## Species Specificity:

human

## Cited Species:

human, mouse

**Note-IHC: suggested antigen retrieval with TE buffer pH 9.0; (\*) Alternatively, antigen retrieval may be performed with citrate buffer pH 6.0**

## Positive Controls:

WB : HepG2 cells, COLO 320 cells, HEK-293 cells, HeLa cells

IHC : human brain tissue, human colon cancer tissue, human liver cancer tissue, human pancreas tissue

## Background Information

The function of TMEM230/C20orf30 has not been widely studied, and is yet to be fully elucidated. TMEM230 is primarily a transmembrane protein of synaptic vesicles in neurons. Disease-linked TMEM230 mutants impair synaptic vesicle trafficking leading to Parkinson's disease. Two isoforms were produced by alternative splicing with predicted MW of 13 and 20 kDa. 13 kDa isoform accounts for >95% of the total protein isoforms (27270108).

## Notable Publications

Author	Pubmed ID	Journal	Application
Boris Simonetti	31576058	Nat Cell Biol	WB
Han-Xiang Deng	27270108	Nat Genet	WB
Sandra L Siedlak	28527219	J Alzheimers Dis	WB, IHC

## Storage

## Storage:

Store at -20°C. Stable for one year after shipment.

## Storage Buffer:

PBS with 0.02% sodium azide and 50% glycerol pH 7.3.

Aliquoting is unnecessary for -20°C storage

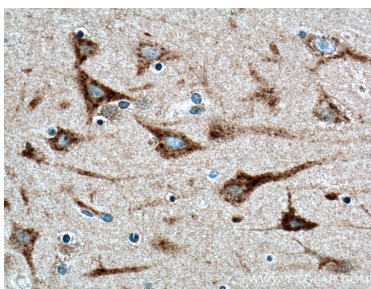
For technical support and original validation data for this product please contact:

T: 4006900926

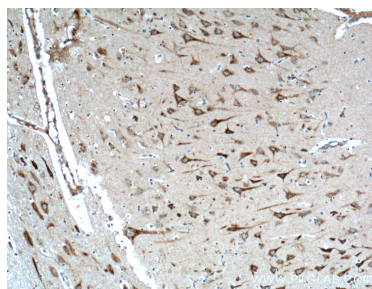
E: [Proteintech-CN@ptglab.com](mailto:Proteintech-CN@ptglab.com)W: [ptgcn.com](http://ptgcn.com)

This product is exclusively available under Proteintech Group brand and is not available to purchase from any other manufacturer.

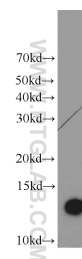
## Selected Validation Data



Immunohistochemical analysis of paraffin-embedded human brain tissue slide using 21466-1-AP (TMEM230 antibody) at dilution of 1:200 (under 40x lens). Heat mediated antigen retrieval with Tris-EDTA buffer (pH 9.0).



Immunohistochemical analysis of paraffin-embedded human brain tissue slide using 21466-1-AP (TMEM230 antibody) at dilution of 1:200 (under 10x lens). Heat mediated antigen retrieval with Tris-EDTA buffer (pH 9.0).



HepG2 cells were subjected to SDS PAGE followed by western blot with 21466-1-AP (TMEM230 antibody) at dilution of 1:1000 incubated at room temperature for 1.5 hours.