

For Research Use Only

# IGSF21 Polyclonal antibody

Catalog Number: 21465-1-AP

Featured Product

5 Publications



## Basic Information

Catalog Number:

21465-1-AP

Size:

400 µg/ml

Source:

Rabbit

Isotype:

IgG

Immunogen Catalog Number:

AG15062

GenBank Accession Number:

BC007618

GeneID (NCBI):

84966

UNIPROT ID:

Q96ID5

Full Name:

immunoglobulin superfamily, member

21

Calculated MW:

467 aa, 52 kDa

Observed MW:

48-50 kDa

Purification Method:

Antigen affinity purification

Recommended Dilutions:

WB 1:500-1:2000

## Applications

Tested Applications:

WB, ELISA

Cited Applications:

WB, IHC, CoIP

Species Specificity:

human, mouse, rat

Cited Species:

human, mouse

Positive Controls:

WB : mouse brain tissue,

## Background Information

IGSF21 (Immunoglobulin superfamily member 21) is a GPI-anchored protein that contains two immunoglobulin-like domains (Ig-like 1 and Ig-like 2). The Ig-like 1 domain of IGSF21 is indispensable for synaptogenic activity whereas its Ig-like 2 domain is secondarily responsible for the activity. It has been reported that IGSF21 selectively regulates inhibitory presynaptic differentiation through interacting with presynaptic neuroligin 2 and plays a crucial role in synaptic inhibition in the brain. (PMID: 28864826)

## Notable Publications

Author	Pubmed ID	Journal	Application
Yuko Tanabe	28864826	Nat Commun	WB
Saori Toyoda	39774335	EMBO Rep	WB
Nicolas Chofflet	38571813	Front Mol Neurosci	WB, CoIP

## Storage

Storage:

Store at -20°C. Stable for one year after shipment.

Storage Buffer:

PBS with 0.02% sodium azide and 50% glycerol pH 7.3.

Aliquoting is unnecessary for -20°C storage

For technical support and original validation data for this product please contact:

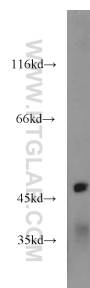
T: 4006900926

E: [Proteintech-CN@ptglab.com](mailto:Proteintech-CN@ptglab.com)

W: [ptgcn.com](http://ptgcn.com)

This product is exclusively available under Proteintech Group brand and is not available to purchase from any other manufacturer.

## Selected Validation Data



mouse brain tissue were subjected to SDS PAGE followed by western blot with 21465-1-AP (IGSF21 antibody) at dilution of 1:1000 incubated at room temperature for 1.5 hours.