

For Research Use Only

SLC24A6 Polyclonal antibody

Catalog Number: 21430-1-AP

Featured Product

8 Publications



Basic Information

Catalog Number:

21430-1-AP

Size:

800 µg/ml

Source:

Rabbit

Isotype:

IgG

Immunogen Catalog Number:

AG16034

GenBank Accession Number:

BC098360

GeneID (NCBI):

80024

UNIPROT ID:

Q6J4K2

Full Name:

solute carrier family 24
(sodium/potassium/calcium
exchanger), member 6

Calculated MW:

584 aa, 64 kDa

Observed MW:

64 kDa

Purification Method:

Antigen affinity purification

Recommended Dilutions:

WB 1:500-1:2000

IHC 1:50-1:500

Applications

Tested Applications:

IHC, WB, ELISA

Cited Applications:

WB, IF, IHC

Species Specificity:

human, mouse, rat

Cited Species:

human, rat, mouse

Positive Controls:

WB : mouse brain tissue, rat brain tissue

IHC : mouse brain tissue, mouse heart tissue

**Note-IHC: suggested antigen retrieval with
TE buffer pH 9.0; (*) Alternatively, antigen
retrieval may be performed with citrate
buffer pH 6.0**

Background Information

SLC24A6, also named as NCLX, is a kind of mitochondrial sodium/calcium antiporter that mediates sodium-dependent calcium efflux from mitochondrion by mediating the exchange of 3 sodium ions per 1 calcium ion. It has been reported that SLC24A6 plays a key role in attenuating potential ROS production and injury upon cardiac reperfusion. SLC24A6 is associated with mitochondrial calcium homeostasis by mediating mitochondrial calcium extrusion. (PMID: 32728214, 20018762, 28219928)

Notable Publications

Author	Pubmed ID	Journal	Application
Yuan Zu	26089852	J Geriatr Cardiol	WB, IF
Vidhya Tangeda	35296653	Cell Death Dis	IHC, IF
Xin-Yu Miao	35107747	Cell Biochem Biophys	WB, IF

Storage

Storage:

Store at -20°C. Stable for one year after shipment.

Storage Buffer:

PBS with 0.02% sodium azide and 50% glycerol pH 7.3.

Aliquoting is unnecessary for -20°C storage

For technical support and original validation data for this product please contact:

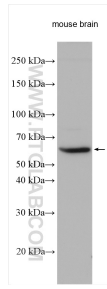
T: 4006900926

E: Proteintech-CN@ptglab.com

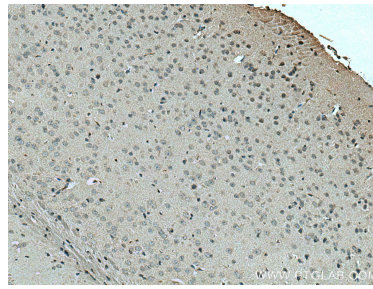
W: ptgcn.com

This product is exclusively available under Proteintech Group brand and is not available to purchase from any other manufacturer.

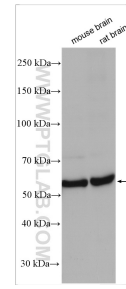
Selected Validation Data



Mouse brain tissue were subjected to SDS PAGE followed by western blot with 21430-1-AP (SLC24A6 antibody) at dilution of 1:1000 incubated at room temperature for 1.5 hours.



Immunohistochemical analysis of paraffin-embedded mouse brain tissue slide using 21430-1-AP (SLC24A6 antibody) at dilution of 1:200 (under 10x lens). Heat mediated antigen retrieval with Tris-EDTA buffer (pH 9.0).



Various lysates were subjected to SDS PAGE followed by western blot with 21430-1-AP (SLC24A6 antibody) at dilution of 1:3000 incubated at room temperature for 1.5 hours.