

For Research Use Only

# TBCCD1 Polyclonal antibody, PBS Only

Catalog Number: 21429-1-PBS



## Basic Information

Catalog Number:

21429-1-PBS

Concentration:

1 mg/ml

Source:

Rabbit

Isotype:

IgG

Immunogen Catalog Number:

AG16032

GenBank Accession Number:

BC025748

GeneID (NCBI):

55171

UNIPROT ID:

Q9NVR7

Full Name:

TBCC domain containing 1

Calculated MW:

557 aa, 64 kDa

Observed MW:

52 kDa

Purification Method:

Antigen Affinity purified

## Applications

Tested Applications:

WB, IF/ICC, Indirect ELISA

Species Specificity:

human

## Background Information

TBCC-domain containing 1 (TBCCD1) belongs to the tubulin-binding cofactor C (TBCC) family, which is a new human pericentriolar matrix component (PMID: 24101722). TBCCD1 localizes at the centrosome and at the spindle midzone, midbody and basal bodies of primary and motile cilia. Knockdown of TBCCD1 in RPE-1 cells caused the dissociation of the centrosome from the nucleus and disorganization of the Golgi apparatus. TBCCD1 is a key regulator of centrosome positioning and consequently of internal cell organization (PMID: 20168327).

## Storage

Storage:

Store at -80°C.

**The product is shipped with ice packs. Upon receipt, store it immediately at -80°C**

Storage Buffer:

PBS only, pH7.3

For technical support and original validation data for this product please contact:

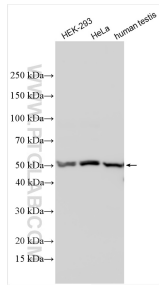
T: 4006900926

E: [Proteintech-CN@ptglab.com](mailto:Proteintech-CN@ptglab.com)

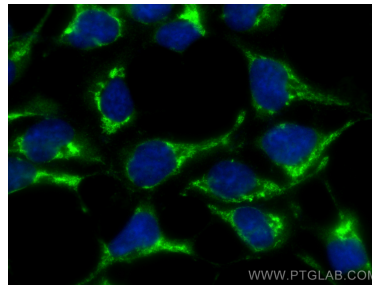
W: [ptgcn.com](http://ptgcn.com)

**This product is exclusively available under Proteintech Group brand and is not available to purchase from any other manufacturer.**

## Selected Validation Data



Various lysates were subjected to SDS PAGE followed by western blot with 21429-1-AP (TBCCD1 antibody) at dilution of 1:1500 incubated at room temperature for 1.5 hours. This data was developed using the same antibody clone with 21429-1-PBS in a different storage buffer formulation.



Immunofluorescent analysis of (-20°C Ethanol) fixed HEK-293 cells using TBCCD1 antibody (21429-1-AP) at dilution of 1:400 and CoraLite®488-Conjugated Goat Anti-Rabbit IgG(H+L) (SA00013-2). This data was developed using the same antibody clone with 21429-1-PBS in a different storage buffer formulation.