

For Research Use Only

PLA2G4F Polyclonal antibody

Catalog Number: 21411-1-AP



Basic Information

Catalog Number: 21411-1-AP	GenBank Accession Number: BC146648	Purification Method: Antigen affinity purification
Size: 350 µg/ml	GeneID (NCBI): 255189	Recommended Dilutions: IHC 1:20-1:200
Source: Rabbit	UNIPROT ID: Q68DD2	
Isotype: IgG	Full Name: phospholipase A2, group IVF	
Immunogen Catalog Number: AG15571	Calculated MW: 849 aa, 95 kDa	

Applications

Tested Applications:
IHC, ELISA

Species Specificity:
human

Note-IHC: suggested antigen retrieval with TE buffer pH 9.0; (*) Alternatively, antigen retrieval may be performed with citrate buffer pH 6.0

Positive Controls:

IHC : human prostate hyperplasia tissue, human bladder tissue

Background Information

Storage

Storage:
Store at -20°C. Stable for one year after shipment.
Storage Buffer:
PBS with 0.02% sodium azide and 50% glycerol pH 7.3.
Aliquoting is unnecessary for -20°C storage

For technical support and original validation data for this product please contact:

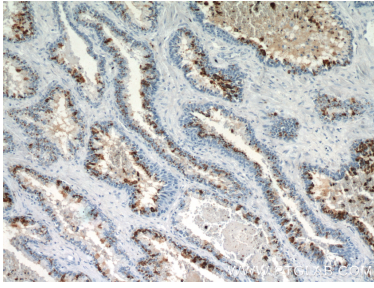
T: 4006900926

E: Proteintech-CN@ptglab.com

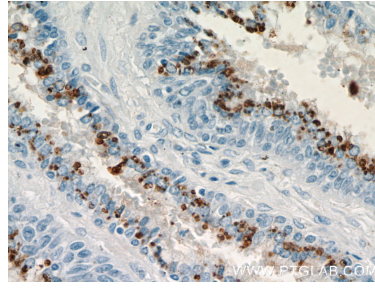
W: ptgcn.com

This product is exclusively available under Proteintech Group brand and is not available to purchase from any other manufacturer.

Selected Validation Data



Immunohistochemical analysis of paraffin-embedded human prostate hyperplasia using 21411-1-AP (PLA2G4F antibody) at dilution of 1:200 (under 10x lens).



Immunohistochemical analysis of paraffin-embedded human prostate hyperplasia using 21411-1-AP (PLA2G4F antibody) at dilution of 1:200 (under 40x lens).