

For Research Use Only

MRC2 Polyclonal antibody, PBS Only

Catalog Number: 21410-1-PBS



Basic Information

Catalog Number: 21410-1-PBS	GenBank Accession Number: BC146647	Purification Method: Antigen affinity purification
Size: 1 mg/ml	GeneID (NCBI): 9902	
Source: Rabbit	UNIPROT ID: Q9UBGO	
Isotype: IgG	Full Name: mannose receptor, C type 2	
Immunogen Catalog Number: AG15570	Calculated MW: 1479 aa, 167 kDa	
	Observed MW: 170 kDa	

Applications

Tested Applications:
WB, Indirect ELISA

Species Specificity:
human

Background Information

C-type mannose receptor 2 (MRC2), also known as CD280, CLEC13E, ENDO180, KIAA0709, or UPARAP, is a type I transmembrane glycoprotein that belongs to the macrophage mannose receptor protein family (PMID: 10683150; 10636902; 9734811). It contains an N-terminal cysteine-rich domain, a fibronectin type II domain (FNII), eight C-type-lectin-like domains, and a transmembrane region followed by a small cytoplasmic domain (PMID: 34012764). MRC2 is a recycling endocytic receptor that functions in both these cellular activities by promoting cell migration and uptake of collagens for intracellular degradation (PMID: 17974964). MRC2 is expressed in several cells and organs including fibroblasts, endothelial cells, and macrophages. Altered MRC2 expression has been associated with the development and progression of different cancers, including head and neck squamous cell carcinoma, breast cancer, hepatocellular cancer, and prostate cancer (PMID: 36188226; 37666484; 17974964; 25162823).

Storage

Storage:
Store at -80°C.
The product is shipped with ice packs. Upon receipt, store it immediately at -80°C

Storage Buffer:
PBS Only

For technical support and original validation data for this product please contact:

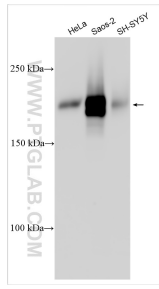
T: 4006900926

E: Proteintech-CN@ptglab.com

W: ptgcn.com

This product is exclusively available under Proteintech Group brand and is not available to purchase from any other manufacturer.

Selected Validation Data



Various lysates were subjected to SDS PAGE followed by western blot with 21410-1-AP (MRC2 antibody) at dilution of 1:4000 incubated at room temperature for 1.5 hours. This data was developed using the same antibody clone with 21410-1-PBS in a different storage buffer formulation.