

# SR140 Polyclonal antibody

Catalog Number: 21399-1-AP

## Basic Information

**Catalog Number:**

21399-1-AP

**Size:**

900 µg/ml

**Source:**

Rabbit

**Isotype:**

IgG

**Immunogen Catalog Number:**

AG16093

**GenBank Accession Number:**

BC111692

**GeneID (NCBI):**

23350

**UNIPROT ID:**

O15042

**Full Name:**

U2-associated SR140 protein

**Calculated MW:**

1029 aa, 118 kDa

**Observed MW:**

120-140 kDa

**Purification Method:**

Antigen affinity purification

**Recommended Dilutions:**

WB 1:1000-1:4000

IHC 1:20-1:200

IF/ICC 1:200-1:800

## Applications

**Tested Applications:**

WB, IHC, IF/ICC, ELISA

**Species Specificity:**

human, mouse, rat

**Note-IHC: suggested antigen retrieval with TE buffer pH 9.0; (\*) Alternatively, antigen retrieval may be performed with citrate buffer pH 6.0**

**Positive Controls:**

**WB :** mouse heart tissue, HeLa cells, human brain tissue, L02 cells

**IHC :** human breast cancer tissue,

**IF/ICC :** HeLa cells, HepG2 cells, HEK-293 cells

## Background Information

### Storage

**Storage:**

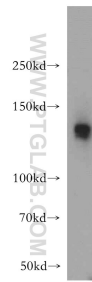
Store at -20°C. Stable for one year after shipment.

**Storage Buffer:**

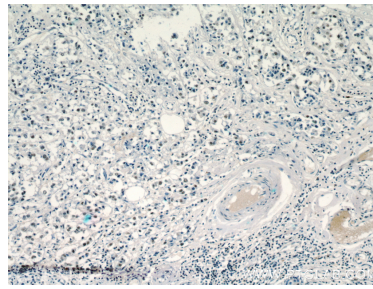
PBS with 0.02% sodium azide and 50% glycerol pH 7.3.

Aliquoting is unnecessary for -20°C storage

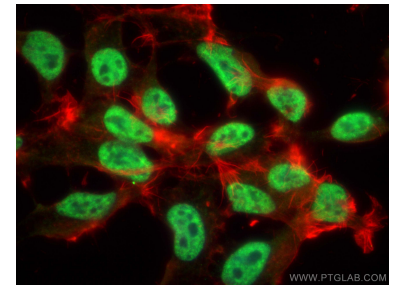
## Selected Validation Data



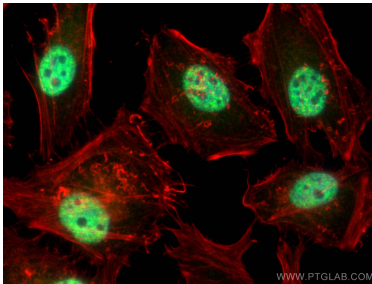
mouse heart tissue were subjected to SDS PAGE followed by western blot with 21399-1-AP (SR140 antibody) at dilution of 1:500 incubated at room temperature for 1.5 hours.



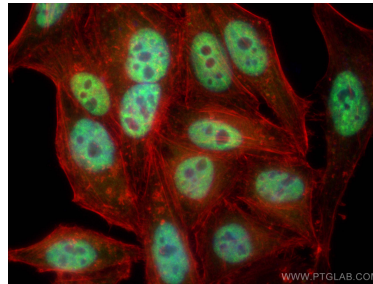
Immunohistochemical analysis of paraffin-embedded human breast cancer using 21399-1-AP (SR140 antibody) at dilution of 1:100 (under 10x lens).



Immunofluorescent analysis of (4% PFA) fixed HEK-293 cells using SR140 antibody (21399-1-AP) at dilution of 1:400 and CoraLite®488-Conjugated AffiniPure Goat Anti-Rabbit IgG(H+L) (SA00013-2), CL594-phalloidin (red).



Immunofluorescent analysis of (4% PFA) fixed HeLa cells using SR140 antibody (21399-1-AP) at dilution of 1:400 and CoraLite®488-Conjugated AffiniPure Goat Anti-Rabbit IgG(H+L) (SA00013-2), CL594-phalloidin (red).



Immunofluorescent analysis of (4% PFA) fixed HepG2 cells using SR140 antibody (21399-1-AP) at dilution of 1:400 and CoraLite®488-Conjugated AffiniPure Goat Anti-Rabbit IgG(H+L) (SA00013-2), CL594-phalloidin (red).