

For Research Use Only

# RNF168 Polyclonal antibody

Catalog Number: 21393-1-AP

Featured Product

12 Publications



## Basic Information

### Catalog Number:

21393-1-AP

### Size:

900 µg/ml

### Source:

Rabbit

### Isotype:

IgG

### Immunogen Catalog Number:

AG16055

### GenBank Accession Number:

BC033791

### GeneID (NCBI):

165918

### UNIPROT ID:

Q8IYW5

### Full Name:

ring finger protein 168

### Calculated MW:

571 aa, 65 kDa

### Observed MW:

65-70 kDa

### Purification Method:

Antigen affinity purification

### Recommended Dilutions:

WB 1:1000-1:4000

IP 0.5-4.0 µg for 1.0-3.0 mg of total protein lysate

IF/ICC 1:400-1:1600

## Applications

### Tested Applications:

WB, IF/ICC, IP, ELISA

### Cited Applications:

WB, IF, IP, ColP

### Species Specificity:

human

### Cited Species:

human

### Positive Controls:

WB : HepG2 cells, HeLa cells, human brain tissue, Jurkat cells, Transfected HEK-293 cells

IP : HepG2 cells,

IF/ICC : HepG2 cells,

## Background Information

## Notable Publications

Author	Pubmed ID	Journal	Application
Bing Deng	31486214	EMBO Rep	WB
Fu-Cheng Wang	36331508	J Med Chem	WB,IP
Xiaopeng Lu	33710666	FASEB J	WB

## Storage

### Storage:

Store at -20°C. Stable for one year after shipment.

### Storage Buffer:

PBS with 0.02% sodium azide and 50% glycerol pH 7.3.

Aliquoting is unnecessary for -20°C storage

For technical support and original validation data for this product please contact:

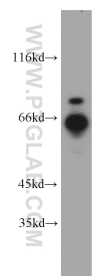
T: 4006900926

E: Proteintech-CN@ptglab.com

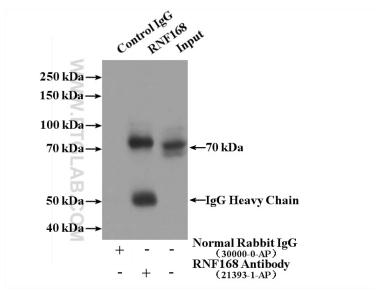
W: ptgcn.com

This product is exclusively available under Proteintech Group brand and is not available to purchase from any other manufacturer.

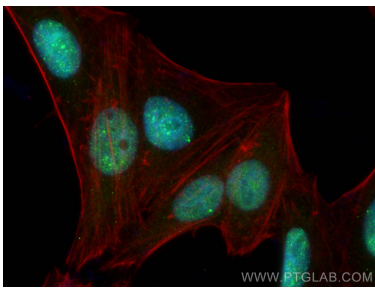
Selected Validation Data



HepG2 cells were subjected to SDS PAGE followed by western blot with 21393-1-AP (RNF 168 antibody) at dilution of 1:500 incubated at room temperature for 1.5 hours.



IP result of anti-RNF168 (IP:21393-1-AP, 4ug; Detection:21393-1-AP 1:500) with HepG2 cells lysate 2400ug.



Immunofluorescent analysis of (4% PFA) fixed HepG2 cells using RNF 168 antibody (21393-1-AP) at dilution of 1:800 and CoraLite@488-Conjugated Goat Anti-Rabbit IgG(H+L), CL594-Phalloidin (red).