

For Research Use Only

SASS6 Polyclonal antibody

Catalog Number: 21377-1-AP

5 Publications



Basic Information

Catalog Number:

21377-1-AP

Size:

750 µg/ml

Source:

Rabbit

Isotype:

IgG

Immunogen Catalog Number:

AG15917

GenBank Accession Number:

BC101026

GeneID (NCBI):

163786

UNIPROT ID:

Q6UVJ0

Full Name:

spindle assembly 6 homolog (C. elegans)

Calculated MW:

657 aa, 74 kDa

Observed MW:

70-74 kDa

Purification Method:

Antigen affinity purification

Recommended Dilutions:

WB 1:500-1:2000

IP 0.5-4.0 µg for 1.0-3.0 mg of total protein lysate

IHC 1:50-1:500

Applications

Tested Applications:

WB, IP, IHC, ELISA

Cited Applications:

WB, IHC, IF

Species Specificity:

human

Cited Species:

human

Note-IHC: suggested antigen retrieval with TE buffer pH 9.0; (*) Alternatively, antigen retrieval may be performed with citrate buffer pH 6.0

Positive Controls:

WB : HeLa cells, human testis tissue, MCF-7 cells

IP : HeLa cells,

IHC : mouse testis tissue, human kidney tissue

Background Information

Notable Publications

Author	Pubmed ID	Journal	Application
Tianyu Wu	36395215	Science	IF
Hindol Gupta	32442461	Curr Biol	WB
Lili Du	33907854	Oncol Rep	WB, IHC

Storage

Storage:

Store at -20°C. Stable for one year after shipment.

Storage Buffer:

PBS with 0.02% sodium azide and 50% glycerol pH 7.3.

Aliquoting is unnecessary for -20°C storage

For technical support and original validation data for this product please contact:

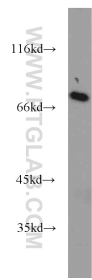
T: 4006900926

E: Proteintech-CN@ptglab.com

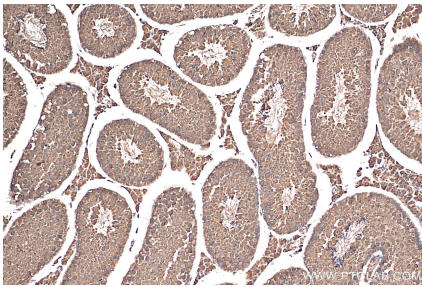
W: ptgcn.com

This product is exclusively available under Proteintech Group brand and is not available to purchase from any other manufacturer.

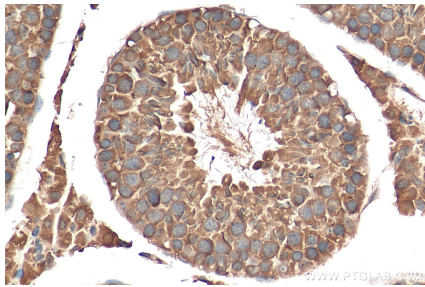
Selected Validation Data



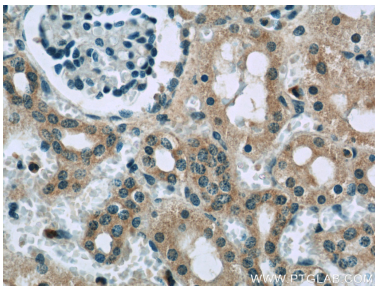
HeLa cells were subjected to SDS PAGE followed by western blot with 21377-1-AP (SASS6 antibody) at dilution of 1:1000 incubated at room temperature for 1.5 hours.



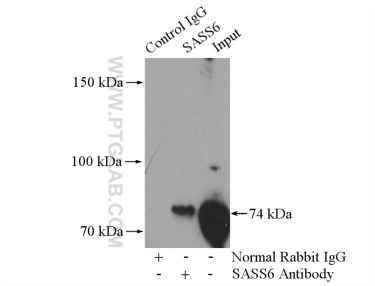
Immunohistochemical analysis of paraffin-embedded mouse testis tissue slide using 21377-1-AP (SASS6 antibody) at dilution of 1:200 (under 10x lens). Heat mediated antigen retrieval with Tris-EDTA buffer (pH 9.0).



Immunohistochemical analysis of paraffin-embedded mouse testis tissue slide using 21377-1-AP (SASS6 antibody) at dilution of 1:200 (under 40x lens). Heat mediated antigen retrieval with Tris-EDTA buffer (pH 9.0).



Immunohistochemical analysis of paraffin-embedded human kidney slide using 21377-1-AP (SASS6 Antibody) at dilution of 1:50.



IP result of anti-SASS6 (IP:21377-1-AP, 4ug; Detection:21377-1-AP 1:1000) with HeLa cells lysate 600ug.