

For Research Use Only

# PKIG Polyclonal antibody, PBS Only

Catalog Number: 21371-1-PBS



## Basic Information

Catalog Number:

21371-1-PBS

Source:

Rabbit

Isotype:

IgG

Immunogen Catalog Number:

AG15878

GenBank Accession Number:

BC104257

GeneID (NCBI):

11142

UNIPROT ID:

Q9Y2B9

Full Name:

protein kinase (cAMP-dependent,  
catalytic) inhibitor gamma

Calculated MW:

76 aa, 8 kDa

Observed MW:

5-8 kDa

Purification Method:

Antigen affinity purification

## Applications

Tested Applications:

WB, IF/ICC, Indirect ELISA

Species Specificity:

human, mouse, rat

## Background Information

### Storage

Storage:

Store at -80°C.

**The product is shipped with ice packs. Upon receipt, store it immediately at -80°C**

Storage Buffer:

PBS only, pH7.3

For technical support and original validation data for this product please contact:

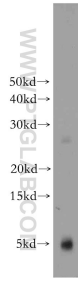
T: 4006900926

E: [Proteintech-CN@ptglab.com](mailto:Proteintech-CN@ptglab.com)

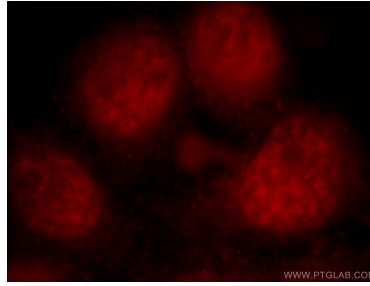
W: [ptgcn.com](http://ptgcn.com)

**This product is exclusively available under Proteintech Group brand and is not available to purchase from any other manufacturer.**

## Selected Validation Data



mouse heart tissue were subjected to SDS PAGE followed by western blot with 21371-1-AP (PKIG antibody) at dilution of 1:200 incubated at room temperature for 1.5 hours. This data was developed using the same antibody clone with 21371-1-PBS in a different storage buffer formulation.



Immunofluorescent analysis of HeLa cells, using PKIG antibody 21371-1-AP at 1:25 dilution and Rhodamine-labeled goat anti-rabbit IgG (red). This data was developed using the same antibody clone with 21371-1-PBS in a different storage buffer formulation.