

For Research Use Only

# LST1 Polyclonal antibody

Catalog Number: 21361-1-AP

Featured Product

1 Publications



## Basic Information

Catalog Number:

21361-1-AP

Size:

600 µg/ml

Source:

Rabbit

Isotype:

IgG

Immunogen Catalog Number:

AG15817

GenBank Accession Number:

BC103856

GeneID (NCBI):

7940

UNIPROT ID:

O00453

Full Name:

leukocyte specific transcript 1

Calculated MW:

97 aa, 11 kDa

Observed MW:

10-15 kDa

Purification Method:

Antigen affinity purification

Recommended Dilutions:

WB 1:1000-1:4000

IHC 1:200-1:800

IF/ICC 1:50-1:500

## Applications

Tested Applications:

WB, IHC, IF/ICC, ELISA

Cited Applications:

WB

Species Specificity:

human, mouse, rat

Cited Species:

human

**Note-IHC: suggested antigen retrieval with TE buffer pH 9.0; (\*) Alternatively, antigen retrieval may be performed with citrate buffer pH 6.0**

Positive Controls:

WB : THP-1 cells, mouse brain tissue, rat brain tissue

IHC : mouse brain tissue,

IF/ICC : HeLa cells,

## Background Information

LST1 (Leukocyte Specific Transcript 1), also known as B144, is a small adaptor protein expressed in leukocytes of myeloid lineage. LST1 splice variants (LST1/A-LST1/N) have been detected in various cell types, and thought to affect mainly LST1 gene expression and splicing, are associated with inflammatory conditions (PMID: 10706707, PMID: 33986741). The molecular weight of LST1 protein may vary between different lysates.

## Notable Publications

Author	Pubmed ID	Journal	Application
Junyi Zhang	36754676	Braz J Otorhinolaryngol	WB

## Storage

Storage:

Store at -20°C. Stable for one year after shipment.

Storage Buffer:

PBS with 0.02% sodium azide and 50% glycerol pH 7.3.

Aliquoting is unnecessary for -20°C storage

For technical support and original validation data for this product please contact:

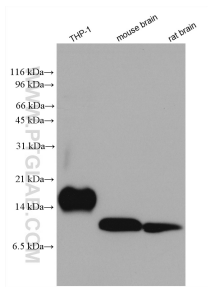
T: 4006900926

E: [Proteintech-CN@ptglab.com](mailto:Proteintech-CN@ptglab.com)

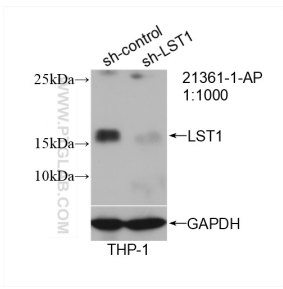
W: [ptgcn.com](http://ptgcn.com)

This product is exclusively available under Proteintech Group brand and is not available to purchase from any other manufacturer.

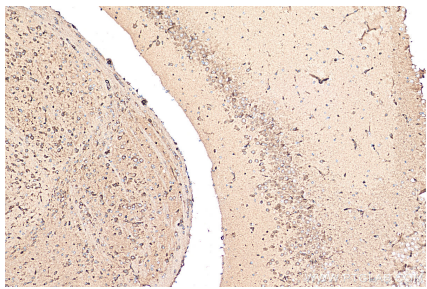
Selected Validation Data



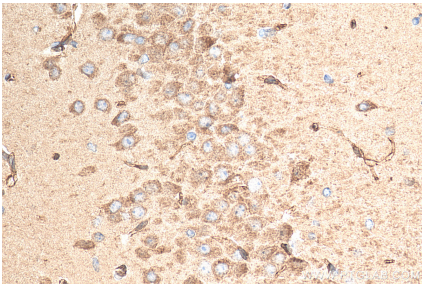
Various lysates were subjected to SDS PAGE followed by western blot with 21361-1-AP (LST1 antibody) at dilution of 1:2000 incubated at room temperature for 1.5 hours.



WB result of LST1 antibody (21361-1-AP; 1:1000; incubated at room temperature for 1.5 hours) with sh-Control and sh-LST1 transfected THP-1 cells.



Immunohistochemical analysis of paraffin-embedded mouse brain tissue slide using 21361-1-AP (LST1 antibody) at dilution of 1:400 (under 10x lens). Heat mediated antigen retrieval with Tris-EDTA buffer (pH 9.0).



Immunohistochemical analysis of paraffin-embedded mouse brain tissue slide using 21361-1-AP (LST1 antibody) at dilution of 1:400 (under 40x lens). Heat mediated antigen retrieval with Tris-EDTA buffer (pH 9.0).



Immunofluorescent analysis of (-20°C Methanol) fixed HeLa cells using LST1 antibody (21361-1-AP) at dilution of 1:200 and CoraLite® 488-Conjugated AffiniPure Goat Anti-Rabbit IgG(H+L).