

For Research Use Only

# ITGB1BP2 Polyclonal antibody

Catalog Number: 21359-1-AP



## Basic Information

Catalog Number:

21359-1-AP

Size:

240 µg/ml

Source:

Rabbit

Isotype:

IgG

Immunogen Catalog Number:

AG15808

GenBank Accession Number:

BC108901

GeneID (NCBI):

26548

UNIPROT ID:

Q9UKP3

Full Name:

integrin beta 1 binding protein  
(melusin) 2

Calculated MW:

347 aa, 38 kDa

Observed MW:

40-45 kDa

Purification Method:

Antigen affinity purification

Recommended Dilutions:

WB 1:500-1:1000

IF/ICC 1:10-1:100

## Applications

Tested Applications:

WB, IF/ICC, ELISA

Species Specificity:

human, mouse, rat

Positive Controls:

WB : human heart tissue,

IF/ICC : HepG2 cells,

## Background Information

### Storage

Storage:

Store at -20°C. Stable for one year after shipment.

Storage Buffer:

PBS with 0.02% sodium azide and 50% glycerol pH 7.3.

Aliquoting is unnecessary for -20°C storage

For technical support and original validation data for this product please contact:

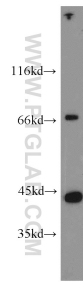
T: 4006900926

E: [Proteintech-CN@ptglab.com](mailto:Proteintech-CN@ptglab.com)

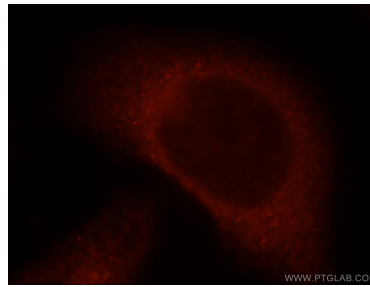
W: [ptgcn.com](http://ptgcn.com)

This product is exclusively available under Proteintech Group brand and is not available to purchase from any other manufacturer.

## Selected Validation Data



human heart tissue were subjected to SDS PAGE followed by western blot with 21359-1-AP (ITGB1BP2 antibody) at dilution of 1:600 incubated at room temperature for 1.5 hours.



Immunofluorescent analysis of HepG2 cells, using ITGB1BP2 antibody 21359-1-AP at 1:25 dilution and Rhodamine-labeled goat anti-rabbit IgG (red).