

For Research Use Only

PLEKHO2 Polyclonal antibody

Catalog Number: 21356-1-AP

1 Publications



Basic Information

Catalog Number:

21356-1-AP

Concentration:

287 ug/ml

Source:

Rabbit

Isotype:

IgG

Immunogen Catalog Number:

AG15786

GenBank Accession Number:

BC008744

GeneID (NCBI):

80301

UNIPROT ID:

Q8TD55

Full Name:

pleckstrin homology domain
containing, family O member 2

Calculated MW:

490 aa, 53 kDa

Observed MW:

53 kDa

Purification Method:

Antigen affinity purification

Recommended Dilutions:

WB 1:200-1:1000

IHC 1:50-1:500

IF/ICC 1:200-1:800

Applications

Tested Applications:

WB, IHC, IF/ICC, ELISA

Cited Applications:

IHC

Species Specificity:

human, mouse

Cited Species:

human

**Note-IHC: suggested antigen retrieval with
TE buffer pH 9.0; (*) Alternatively, antigen
retrieval may be performed with citrate
buffer pH 6.0**

Positive Controls:

WB : HeLa cells, mouse thymus tissue

IHC : mouse spleen tissue,

IF/ICC : HeLa cells,

Background Information

Pleckstrin homology domain-containing proteins family O member 2 (PLEKHO2)'s function remains largely unknown. Genetic polymorphisms of PLEKHO2 contribute to diabetic retinopathy (DR) development. Functional prediction analysis strengthened the likelihood of participation of PLEKHO2 in the development of DR (Eric C. Han et al., 2012).

Notable Publications

Author	Pubmed ID	Journal	Application
Junchao Zhu	38169731	Front Immunol	IHC

Storage

Storage:

Store at -20°C. Stable for one year after shipment.

Storage Buffer:

PBS with 0.02% sodium azide and 50% glycerol, pH7.3

Aliquoting is unnecessary for -20°C storage

For technical support and original validation data for this product please contact:

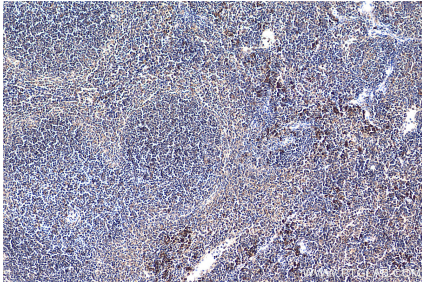
T: 4006900926

E: Proteintech-CN@ptglab.com

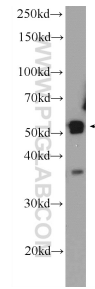
W: ptgcn.com

This product is exclusively available under Proteintech Group brand and is not available to purchase from any other manufacturer.

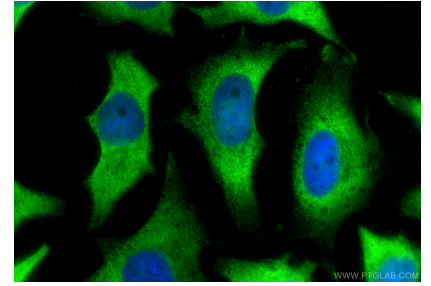
Selected Validation Data



Immunohistochemical analysis of paraffin-embedded mouse spleen tissue slide using 21356-1-AP (PLEKHO2 antibody) at dilution of 1:200 (under 10x lens). Heat mediated antigen retrieval with Tris-EDTA buffer (pH 9.0).



HeLa cells were subjected to SDS PAGE followed by western blot with 21356-1-AP (PLEKHO2 Antibody) at dilution of 1:300 incubated at 4 degree celsius over night.



Immunofluorescent analysis of (-20°C Ethanol) fixed HeLa cells using PLEKHO2 antibody (21356-1-AP) at dilution of 1:400 and CoraLite®488-Conjugated Goat Anti-Rabbit IgG(H+L) (SA00013-2).