

For Research Use Only

# SLC36A2 Polyclonal antibody

Catalog Number: 21352-1-AP



## Basic Information

Catalog Number:

21352-1-AP

Size:

750 µg/ml

Source:

Rabbit

Isotype:

IgG

Immunogen Catalog Number:

AG15742

GenBank Accession Number:

BC101101

GeneID (NCBI):

153201

UNIPROT ID:

Q495M3

Full Name:

solute carrier family 36  
(proton/amino acid symporter),  
member 2

Calculated MW:

483 aa, 53 kDa

Observed MW:

53-60 kDa

Purification Method:

Antigen affinity purification

Recommended Dilutions:

WB 1:500-1:3000

## Applications

Tested Applications:

WB, ELISA

Species Specificity:

human, Mouse, Rat

Positive Controls:

WB : mouse kidney tissue, rat kidney tissue

## Background Information

SLC36A2 encodes proton-coupled amino acid transporter 2 (PAT2), a high-affinity cotransporter of glycine and proline coupled with the uptake of a proton in kidney and muscles. The inactivation or reduced function of SLC36A2 is the predominant determinant of the inherited iminoglycinuria phenotype in humans.

## Storage

Storage:

Store at -20°C. Stable for one year after shipment.

Storage Buffer:

PBS with 0.02% sodium azide and 50% glycerol pH 7.3.

Aliquoting is unnecessary for -20°C storage

For technical support and original validation data for this product please contact:

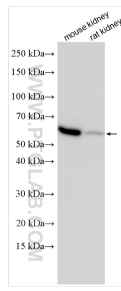
T: 4006900926

E: [Proteintech-CN@ptglab.com](mailto:Proteintech-CN@ptglab.com)

W: [ptgcn.com](http://ptgcn.com)

**This product is exclusively available under Proteintech Group brand and is not available to purchase from any other manufacturer.**

## Selected Validation Data



Various lysates were subjected to SDS PAGE followed by western blot with 21352-1-AP (SLC36A2 antibody) at dilution of 1:1500 incubated at room temperature for 1.5 hours.