

For Research Use Only

TRPC4 Polyclonal antibody

Catalog Number: 21349-1-AP **2 Publications**



Basic Information

Catalog Number:

21349-1-AP

Size:

600 µg/ml

Source:

Rabbit

Isotype:

IgG

Immunogen Catalog Number:

AG15698

GenBank Accession Number:

BC104725

GeneID (NCBI):

7223

UNIPROT ID:

Q9UBN4

Full Name:

transient receptor potential cation channel, subfamily C, member 4

Calculated MW:

977 aa, 112 kDa

Observed MW:

100-120 kDa

Purification Method:

Antigen affinity purification

Recommended Dilutions:

WB 1:500-1:3000

IHC 1:20-1:200

Applications

Tested Applications:

IHC, WB, ELISA

Cited Applications:

WB

Species Specificity:

human, mouse, rat

Cited Species:

human

Note-IHC: suggested antigen retrieval with TE buffer pH 9.0; (*) Alternatively, antigen retrieval may be performed with citrate buffer pH 6.0

Positive Controls:

WB : HEK-293 cells, mouse brain tissue, rat brain tissue

IHC : human kidney tissue,

Background Information

Notable Publications

Author	Pubmed ID	Journal	Application
Da-Cen Lin	34311033	Cancer Lett	WB
Jingjing Duan	31355338	Sci Adv	

Storage

Storage:

Store at -20°C. Stable for one year after shipment.

Storage Buffer:

PBS with 0.02% sodium azide and 50% glycerol pH 7.3.

Aliquoting is unnecessary for -20°C storage

For technical support and original validation data for this product please contact:

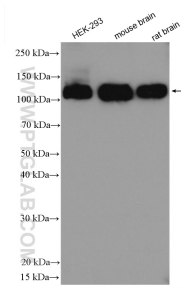
T: 4006900926

E: Proteintech-CN@ptglab.com

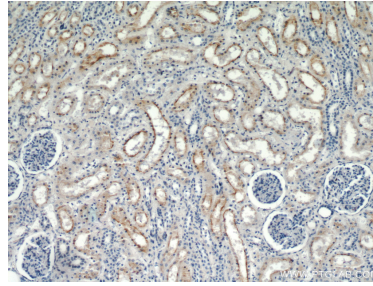
W: ptgcn.com

This product is exclusively available under Proteintech Group brand and is not available to purchase from any other manufacturer.

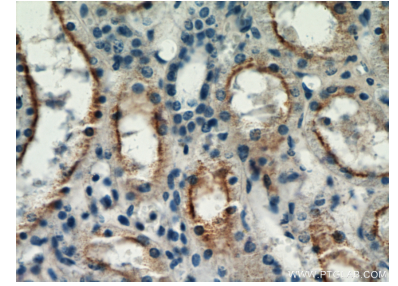
Selected Validation Data



Various lysates were subjected to SDS PAGE followed by western blot with 21349-1-AP (TRPC4 antibody) at dilution of 1:1500 incubated at room temperature for 1.5 hours.



Immunohistochemical analysis of paraffin-embedded human kidney using 21349-1-AP (TRPC4 antibody) at dilution of 1:50 (under 10x lens).



Immunohistochemical analysis of paraffin-embedded human kidney using 21349-1-AP (TRPC4 antibody) at dilution of 1:50 (under 40x lens).