

For Research Use Only

# INE1 Polyclonal antibody

Catalog Number: 21340-1-AP



## Basic Information

Catalog Number:

21340-1-AP

Size:

200 µg/ml

Source:

Rabbit

Isotype:

IgG

Immunogen Catalog Number:

AG15601

GenBank Accession Number:

BC069772

GeneID (NCBI):

8552

Full Name:

inactivation escape 1 (non-protein coding)

Calculated MW:

51 aa, 5 kDa

Observed MW:

5-8 kDa

Purification Method:

Antigen affinity purification

Recommended Dilutions:

WB 1:500-1:1000

IHC 1:20-1:200

## Applications

Tested Applications:

IHC, WB, ELISA

Species Specificity:

human

Positive Controls:

WB : human brain tissue,

IHC : human liver tissue,

**Note-IHC: suggested antigen retrieval with TE buffer pH 9.0; (\*) Alternatively, antigen retrieval may be performed with citrate buffer pH 6.0**

## Background Information

### Storage

Storage:

Store at -20°C. Stable for one year after shipment.

Storage Buffer:

PBS with 0.02% sodium azide and 50% glycerol pH 7.3.

Aliquoting is unnecessary for -20°C storage

For technical support and original validation data for this product please contact:

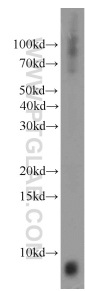
T: 4006900926

E: [Proteintech-CN@ptglab.com](mailto:Proteintech-CN@ptglab.com)

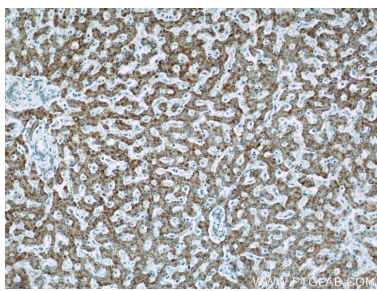
W: [ptgcn.com](http://ptgcn.com)

This product is exclusively available under Proteintech Group brand and is not available to purchase from any other manufacturer.

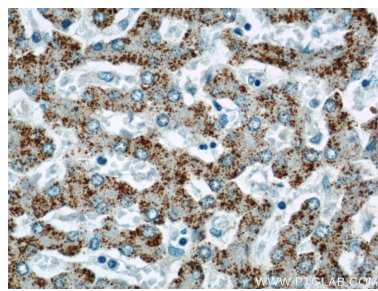
Selected Validation Data



human brain tissue were subjected to SDS PAGE followed by western blot with 21340-1-AP (INE1 antibody) at dilution of 1:300 incubated at room temperature for 1.5 hours.



Immunohistochemical analysis of paraffin-embedded human liver using 21340-1-AP (INE1 antibody) at dilution of 1:50 (under 10x lens).



Immunohistochemical analysis of paraffin-embedded human liver using 21340-1-AP (INE1 antibody) at dilution of 1:50 (under 40x lens).