

For Research Use Only

CHD2 Polyclonal antibody, PBS Only

Catalog Number: 21334-1-PBS

Featured Product



Basic Information

Catalog Number:

21334-1-PBS

Source:

Rabbit

Isotype:

IgG

Immunogen Catalog Number:

AG15429

GenBank Accession Number:

BC020810

GeneID (NCBI):

1106

UNIPROT ID:

O14647

Full Name:

chromodomain helicase DNA binding protein 2

Calculated MW:

1828 aa, 211 kDa

Observed MW:

230-250 kDa

Purification Method:

Antigen affinity purification

Applications

Tested Applications:

WB, IHC, IF/ICC, Indirect ELISA

Species Specificity:

human, rat

Background Information

Chromodomain helicase DNA binding protein 2 (CHD2), a member of the sucrose nonfermenting (SNF-2) protein family of epigenetic regulators, which use the energy from ATP hydrolysis to change nucleosome positioning, composition and chromatin structure (PMID: 33435571). CHD2 protein plays a critical role in embryonic development, tumor suppression and survival (PMID: 24834135). In addition, CHD2 has been proposed to prevent breast cancer initiation, and CHD2 mutations are associated with chronic lymphocytic leukemia.

Storage

Storage:

Store at -80°C.

The product is shipped with ice packs. Upon receipt, store it immediately at -80°C

Storage Buffer:

PBS only, pH7.3

For technical support and original validation data for this product please contact:

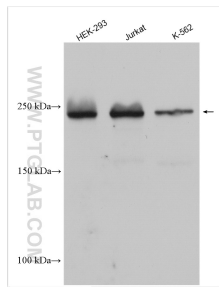
T: 4006900926

E: Proteintech-CN@ptglab.com

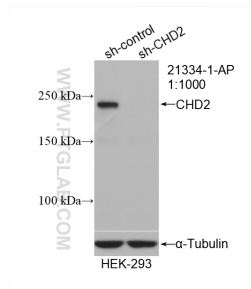
W: ptgcn.com

This product is exclusively available under Proteintech Group brand and is not available to purchase from any other manufacturer.

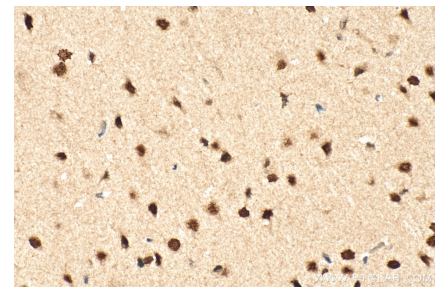
Selected Validation Data



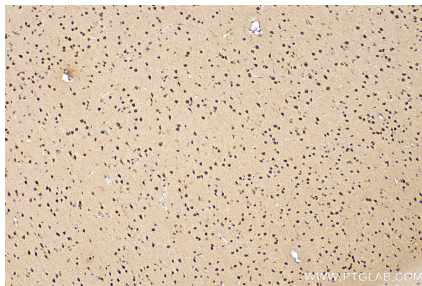
Various lysates were subjected to SDS PAGE followed by western blot with 21334-1-AP (CHD2 antibody) at dilution of 1:4000 incubated at room temperature for 1.5 hours. This data was developed using the same antibody clone with 21334-1-PBS in a different storage buffer formulation.



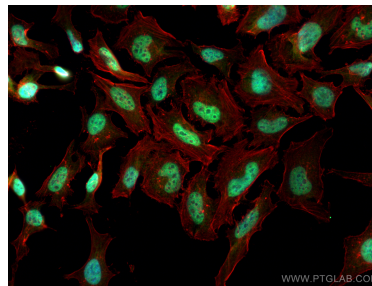
WB result of CHD2 antibody (21334-1-AP; 1:1000; incubated at room temperature for 1.5 hours) with sh-Control and sh-CHD2 transfected HEK-293 cells. This data was developed using the same antibody clone with 21334-1-PBS in a different storage buffer formulation.



Immunohistochemical analysis of paraffin-embedded rat brain tissue slide using 21334-1-AP (CHD2 antibody) at dilution of 1:200 (under 40x lens). Heat mediated antigen retrieval with Tris-EDTA buffer (pH 9.0). This data was developed using the same antibody clone with 21334-1-PBS in a different storage buffer formulation.



Immunohistochemical analysis of paraffin-embedded rat brain tissue slide using 21334-1-AP (CHD2 antibody) at dilution of 1:200 (under 10x lens). Heat mediated antigen retrieval with Tris-EDTA buffer (pH 9.0). This data was developed using the same antibody clone with 21334-1-PBS in a different storage buffer formulation.



Immunofluorescent analysis of (4% PFA) fixed HeLa cells using CHD2 antibody (21334-1-AP) at dilution of 1:400 and CoraLite@488-Conjugated AffiniPure Goat Anti-Rabbit IgG(H+L), CL594-Phalloidin (red). This data was developed using the same antibody clone with 21334-1-PBS in a different storage buffer formulation.