

For Research Use Only

YLPM1 Polyclonal antibody, PBS Only

Catalog Number: 21332-1-PBS



Basic Information

Catalog Number:

21332-1-PBS

Source:

Rabbit

Isotype:

IgG

Immunogen Catalog Number:

AG15408

GenBank Accession Number:

BC023570

GeneID (NCBI):

56252

UNIPROT ID:

P49750

Full Name:

YLP motif containing 1

Calculated MW:

1951 aa, 220 kDa

Observed MW:

200 kDa, 250-290 kDa

Purification Method:

Antigen affinity purification

Applications

Tested Applications:

WB, IF/ICC, IP, Indirect ELISA

Species Specificity:

human, mouse, rat

Background Information

YLPM1 also known as ZAP3, ZAP113, or C14orf170. YLPM1 plays a critical role in the regulation of telomerase activity and transcriptional repression. The molecular weight of the human YLPM1 protein is approximately 250-300 kDa, with a shorter isoform about 200 kDa.

Storage

Storage:

Store at -80°C.

The product is shipped with ice packs. Upon receipt, store it immediately at -80°C

Storage Buffer:

PBS only, pH7.3

For technical support and original validation data for this product please contact:

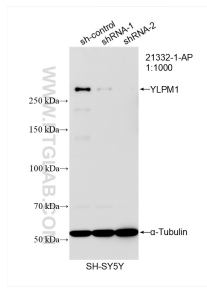
T: 4006900926

E: Proteintech-CN@ptglab.com

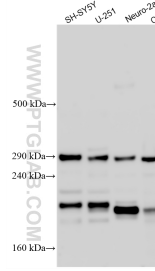
W: ptgcn.com

This product is exclusively available under Proteintech Group brand and is not available to purchase from any other manufacturer.

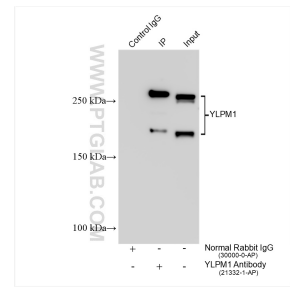
Selected Validation Data



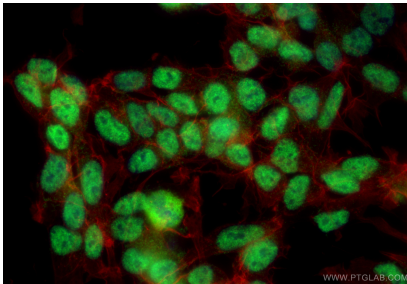
WB result of YLPM1 antibody (21332-1-AP; 1:1000; incubated at room temperature for 1.5 hours) with sh-Control and sh-YLPM1 transfected SH-SY5Y cells. This data was developed using the same antibody clone with 21332-1-PBS in a different storage buffer formulation.



Various lysates were subjected to SDS PAGE followed by western blot with 21332-1-AP (YLPM1 antibody) at dilution of 1:1000 incubated at room temperature for 1.5 hours. This data was developed using the same antibody clone with 21332-1-PBS in a different storage buffer formulation.



IP result of anti-YLPM1 (IP:21332-1-AP, 4ug; Detection:21332-1-AP 1:1000) with Neuro-2a cells lysate 1440 ug. This data was developed using the same antibody clone with 21332-1-PBS in a different storage buffer formulation.



Immunofluorescent analysis of (4% PFA) fixed SH-SY5Y cells using YLPM1 antibody (21332-1-AP) at dilution of 1:500 and Coralite@488-Conjugated Goat Anti-Rabbit IgG(H+L) (SA00013-2), CL594-Phalloidin (red). This data was developed using the same antibody clone with 21332-1-PBS in a different storage buffer formulation.