

For Research Use Only

TTC39A Polyclonal antibody

Catalog Number: 21323-1-AP



Basic Information

Catalog Number: 21323-1-AP	GenBank Accession Number: BC004399	Purification Method: Antigen affinity purification
Size: 600 µg/ml	GeneID (NCBI): 22996	Recommended Dilutions: WB 1:500-1:1000 IHC 1:20-1:200 IF 1:10-1:100
Source: Rabbit	UNIPROT ID: Q5SRH9	
Isotype: IgG	Full Name: tetra(ri)co(pte)ide repeat domain 39A	
Immunogen Catalog Number: AG14874	Calculated MW: 613 aa, 70 kDa	
	Observed MW: 65-70 kDa	

Applications

Tested Applications:
IF/ICC, IHC, WB, ELISA

Species Specificity:
human, mouse, rat

Note-IHC: suggested antigen retrieval with TE buffer pH 9.0; (*) Alternatively, antigen retrieval may be performed with citrate buffer pH 6.0

Positive Controls:

WB : mouse liver tissue, MCF-7 cells

IHC : human breast cancer tissue, human testis tissue

IF : HepG2 cells, Hela cells

Background Information

Storage

Storage:
Store at -20°C. Stable for one year after shipment.
Storage Buffer:
PBS with 0.02% sodium azide and 50% glycerol pH 7.3.
Aliquoting is unnecessary for -20°C storage

For technical support and original validation data for this product please contact:

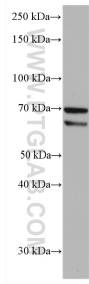
T: 4006900926

E: Proteintech-CN@ptglab.com

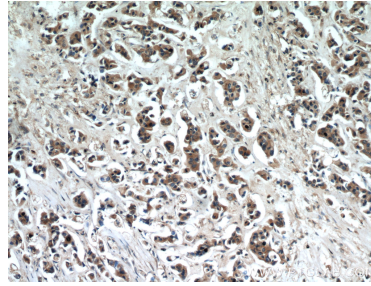
W: ptgcn.com

This product is exclusively available under Proteintech Group brand and is not available to purchase from any other manufacturer.

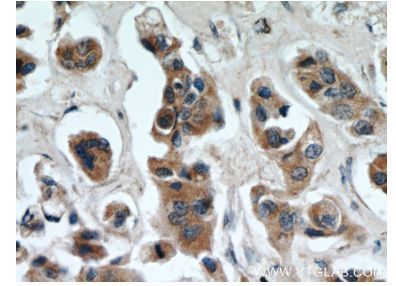
Selected Validation Data



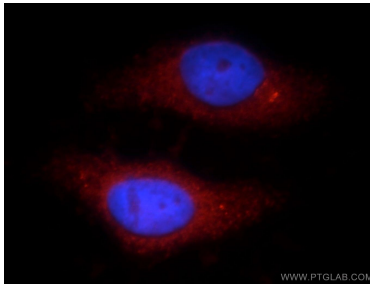
mouse liver tissue were subjected to SDS PAGE followed by western blot with 21323-1-AP (TTC39A antibody) at dilution of 1:800 incubated at room temperature for 1.5 hours.



Immunohistochemical analysis of paraffin-embedded human breast cancer using 21323-1-AP (TTC39A antibody) at dilution of 1:50 (under 10x lens).



Immunohistochemical analysis of paraffin-embedded human breast cancer using 21323-1-AP (TTC39A antibody) at dilution of 1:50 (under 40x lens).



Immunofluorescent analysis of HepG2 cells, using TTC39A antibody 21323-1-AP at 1:25 dilution and Rhodamine-labeled goat anti-rabbit IgG (red). Blue pseudocolor = DAPI (fluorescent DNA dye).