

# NHLRC1 Polyclonal antibody

Catalog Number: 21310-1-AP

## Basic Information

**Catalog Number:**

21310-1-AP

**Size:**

450 µg/ml

**Source:**

Rabbit

**Isotype:**

IgG

**Immunogen Catalog Number:**

AG15940

**GenBank Accession Number:**

BC103888

**GeneID (NCBI):**

378884

**UNIPROT ID:**

Q6VVB1

**Full Name:**

NHL repeat containing 1

**Calculated MW:**

395 aa, 42 kDa

**Observed MW:**

45-47 kDa

**Purification Method:**

Antigen affinity purification

**Recommended Dilutions:**

WB 1:500-1:1000

IHC 1:20-1:200

## Applications

**Tested Applications:**

IHC, WB, ELISA

**Species Specificity:**

human

**Positive Controls:**

WB : L02 cells,

IHC : human heart tissue, human brain tissue

**Note-IHC:** suggested antigen retrieval with **TE buffer pH 9.0; (\*) Alternatively, antigen retrieval may be performed with citrate buffer pH 6.0**

## Background Information

NHLRC1(NHL repeat-containing protein 1) is also named as Malin, EPM2B. It is predicted to encode a 42.3-kDa (395 amino acid) protein, malin, containing a detectable zinc-binding RING finger and six NHL-repeat domains (PMID:12958597). It can suppress the cellular toxicity of misfolded proteins by promoting their degradation through the ubiquitin-proteasome system (UPS). Defects in NHLRC1 are a cause of progressive myoclonic epilepsy type 2 (EPM2). This antibody is specific to NHLRC1.

## Storage

**Storage:**

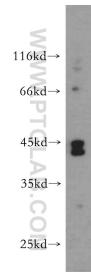
Store at -20°C. Stable for one year after shipment.

**Storage Buffer:**

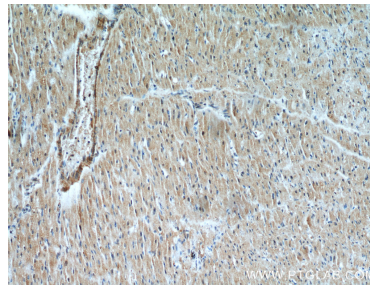
PBS with 0.02% sodium azide and 50% glycerol pH 7.3.

Aliquoting is unnecessary for -20°C storage

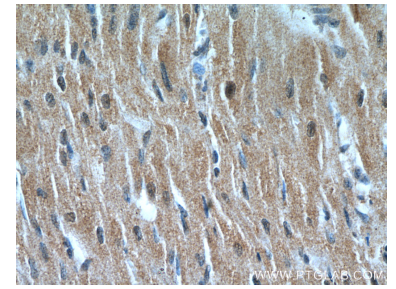
## Selected Validation Data



L02 cells were subjected to SDS PAGE followed by western blot with 21310-1-AP (NHLRC1 antibody) at dilution of 1:400 incubated at room temperature for 1.5 hours.



Immunohistochemical analysis of paraffin-embedded human heart using 21310-1-AP (NHLRC1 antibody) at dilution of 1:50 (under 10x lens).



Immunohistochemical analysis of paraffin-embedded human heart using 21310-1-AP (NHLRC1 antibody) at dilution of 1:50 (under 40x lens).