

For Research Use Only

# JAML Polyclonal antibody, PBS Only

Catalog Number: 21302-1-PBS



## Basic Information

Catalog Number:

21302-1-PBS

Size:

1 mg/ml

Source:

Rabbit

Isotype:

IgG

Immunogen Catalog Number:

AG15900

GenBank Accession Number:

BC100797

GeneID (NCBI):

120425

UNIPROT ID:

Q86YT9

Full Name:

adhesion molecule, interacts with

CXADR antigen 1

Calculated MW:

394 aa, 44 kDa

Observed MW:

44 kDa, 50-70 kDa

Purification Method:

Antigen affinity purification

## Applications

Tested Applications:

WB, IHC, Indirect ELISA

Species Specificity:

human

## Background Information

Junctional adhesion molecules (JAM-A, JAM-B, and JAM-C) are endothelial and epithelial adhesion molecules involved in the recruitment of circulating leukocytes to inflammatory sites (PMID: 19064666). JAML (junctional adhesion molecule-like), also known as AMICA1, is related to JAM proteins. It contains 2 extracellular immunoglobulin-like domains, a transmembrane segment, and a cytoplasmic tail. JAML is expressed on leukocytes and promotes their adhesion to endothelial cells (PMID: 12869515). JAML can regulate neutrophil transepithelial migration via binding interactions with epithelial coxsackie and adenovirus receptor (CAR) (PMID: 15800062). The full-length human JAML protein has a calculated molecular weight of 44 kDa. This antibody raised against 40-275 aa of human JAML protein detects bands with molecular weight of 44 kDa, and 50-70 kDa which probably represent different glycoforms of the protein (PMID: 12869515; 24621992; 15800062).

## Storage

Storage:

Store at -80°C.

**The product is shipped with ice packs. Upon receipt, store it immediately at -80°C**

Storage Buffer:

PBS Only

For technical support and original validation data for this product please contact:

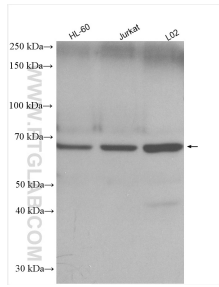
T: 4006900926

E: [Proteintech-CN@ptglab.com](mailto:Proteintech-CN@ptglab.com)

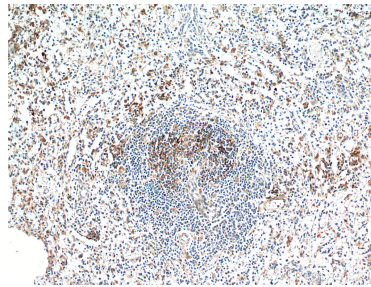
W: [ptgcn.com](http://ptgcn.com)

**This product is exclusively available under Proteintech Group brand and is not available to purchase from any other manufacturer.**

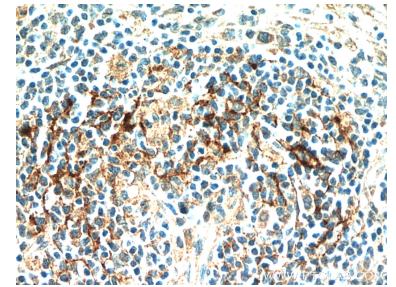
## Selected Validation Data



Various lysates were subjected to SDS PAGE followed by western blot with 21302-1-AP (JAML antibody) at dilution of 1:2000 incubated at room temperature for 1.5 hours. This data was developed using the same antibody clone with 21302-1-PBS in a different storage buffer formulation.



Immunohistochemical analysis of paraffin-embedded human spleen using 21302-1-AP (JAML antibody) at dilution of 1:100 (under 10x lens). This data was developed using the same antibody clone with 21302-1-PBS in a different storage buffer formulation.



Immunohistochemical analysis of paraffin-embedded human spleen using 21302-1-AP (JAML antibody) at dilution of 1:100 (under 40x lens). This data was developed using the same antibody clone with 21302-1-PBS in a different storage buffer formulation.