

For Research Use Only

PLK5 Polyclonal antibody

Catalog Number: 21299-1-AP

2 Publications



Basic Information

Catalog Number:

21299-1-AP

Concentration:

550 µg/ml

Source:

Rabbit

Isotype:

IgG

Immunogen Catalog Number:

AG15881

GenBank Accession Number:

BC100792

GeneID (NCBI):

126520

UNIPROT ID:

Q496M5

Full Name:

polo-like kinase 5 pseudogene

Calculated MW:

336 aa, 36 kDa

Observed MW:

55-60 kDa

Purification Method:

Antigen affinity purification

Recommended Dilutions:

WB 1:500-1:1000

IHC 1:20-1:200

IF/ICC 1:50-1:500

Applications

Tested Applications:

WB, IHC, IF/ICC, ELISA

Cited Applications:

WB, IHC, IF

Species Specificity:

human, mouse

Cited Species:

human, mouse

Note-IHC: suggested antigen retrieval with TE buffer pH 9.0; (*) Alternatively, antigen retrieval may be performed with citrate buffer pH 6.0

Positive Controls:

WB : K-562 cells, mouse testis tissue, mouse kidney tissue

IHC : human brain tissue, human testis tissue

IF/ICC : HeLa cells,

Background Information

PLK5, also named as PLK5P, is an inactive serine/threonine-protein kinase that plays a role in cell cycle progression and neuronal differentiation. Compared with mouse Plk5, the protein kinase domain of human PLK5 is truncated. This is the reason that the MW of mouse Plk5 is about 50-70 kDa, the MW of human PLK5 is about 32-40 kDa. PLK5 is located in the cytoplasm and nucleus(Uniprot). This antibody detects both PLK5 gene of human and mouse.

Notable Publications

Author	Pubmed ID	Journal	Application
Jun Xiao	39817569	Hum Mol Genet	IF
Yitian Zhang	36709605	Eur J Cell Biol	WB,IHC,IF

Storage

Storage:

Store at -20°C. Stable for one year after shipment.

Storage Buffer:

PBS with 0.02% sodium azide and 50% glycerol

Aliquoting is unnecessary for -20°C storage

For technical support and original validation data for this product please contact:

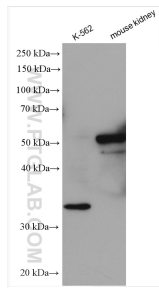
T: 4006900926

E: Proteintech-CN@ptglab.com

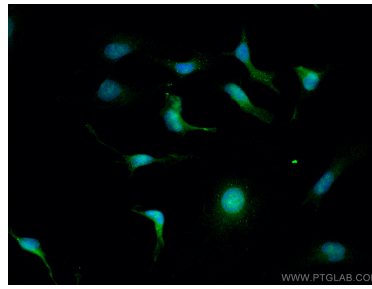
W: ptgcn.com

This product is exclusively available under Proteintech Group brand and is not available to purchase from any other manufacturer.

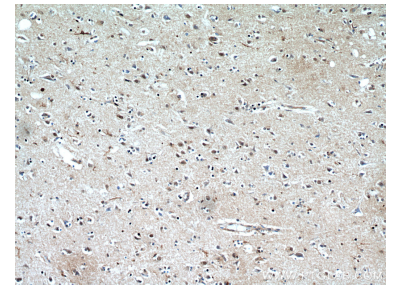
Selected Validation Data



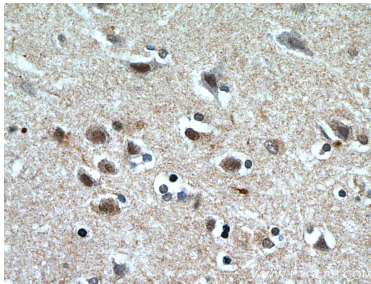
Various lysates were subjected to SDS PAGE followed by western blot with 21299-1-AP (PLK5 antibody) at dilution of 1:600 incubated at room temperature for 1.5 hours.



Immunofluorescent analysis of (4% PFA) fixed HeLa cells using PLK5 antibody (21299-1-AP) at dilution of 1:200 and CoraLite®488-Conjugated Goat Anti-Rabbit IgG(H+L).



Immunohistochemical analysis of paraffin-embedded human brain using 21299-1-AP (PLK5 antibody) at dilution of 1:50 (under 10x lens).



Immunohistochemical analysis of paraffin-embedded human brain using 21299-1-AP (PLK5 antibody) at dilution of 1:50 (under 40x lens).