

For Research Use Only

RB1CC1 Polyclonal antibody

Catalog Number: 21269-1-AP

Featured Product



Basic Information

Catalog Number:

21269-1-AP

Size:

450 ug/ml

Source:

Rabbit

Isotype:

IgG

Immunogen Catalog Number:

AG15739

GenBank Accession Number:

BC017556

GeneID (NCBI):

9821

UNIPROT ID:

Q8TDY2

Full Name:

RB1-inducible coiled-coil 1

Calculated MW:

1594 aa, 183 kDa

Observed MW:

200 kDa

Purification Method:

Antigen affinity purification

Recommended Dilutions:

WB 1:500-1:3000

IHC 1:50-1:500

Applications

Tested Applications:

WB, IHC, ELISA

Species Specificity:

human, mouse, rat

Note-IHC: suggested antigen retrieval with TE buffer pH 9.0; (*) Alternatively, antigen retrieval may be performed with citrate buffer pH 6.0

Positive Controls:

WB : HeLa cells, MCF-7 cells, HEK-293 cells

IHC : human ovary cancer tissue,

Background Information

RB1CC1, also named as RBICC, is implicated in the regulation of RB1 expression and functions as a DNA-binding transcription factor. It is a potent regulator of the RB1 pathway and a mediator that plays a crucial role in muscular differentiation. Its expression is, thus, a prerequisite for myogenic differentiation. Involved in autophagy. RB1CC1 is required for autophagosome formation. It is probably involved in the tumorigenesis of breast cancer. RB1CC1 is frequently mutated in breast cancer and shows characteristics of a classical tumor suppressor gene. This antibody is a rabbit polyclonal antibody raised against residues near the N terminus of human RB1CC1.

Storage

Storage:

Store at -20°C. Stable for one year after shipment.

Storage Buffer:

PBS with 0.02% sodium azide and 50% glycerol pH 7.3.

Aliquoting is unnecessary for -20°C storage

For technical support and original validation data for this product please contact:

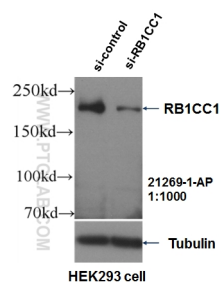
T: 4006900926

E: Proteintech-CN@ptglab.com

W: ptgcn.com

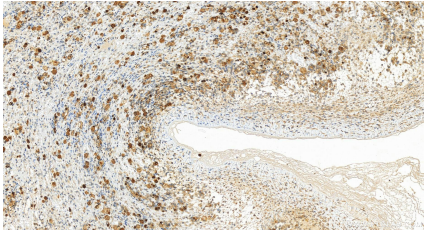
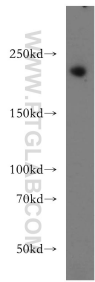
This product is exclusively available under Proteintech Group brand and is not available to purchase from any other manufacturer.

Selected Validation Data



WB result of RB1CC1 antibody (21269-1-AP, 1:1000) with si-Control and si-RB1CC1 transfected HEK293 cells.

HeLa cells were subjected to SDS PAGE followed by western blot with 21269-1-AP (RB1CC1 antibody) at dilution of 1:500 incubated at room temperature for 1.5 hours.



Immunohistochemical analysis of paraffin-embedded human ovary cancer tissue slide using 21269-1-AP (RB1CC1 antibody) at dilution of 1:200 (under 20x lens). Heat mediated antigen retrieval with Tris-EDTA buffer (pH 9.0).