

For Research Use Only

# CTR9 Polyclonal antibody

Catalog Number: 21264-1-AP **4 Publications**



## Basic Information

**Catalog Number:**

21264-1-AP

**Size:**

300 µg/ml

**Source:**

Rabbit

**Isotype:**

IgG

**Immunogen Catalog Number:**

AG15690

**GenBank Accession Number:**

BC058914

**GeneID (NCBI):**

9646

**UNIPROT ID:**

Q6PD62

**Full Name:**

Ctr9, Paf1/RNA polymerase II complex component, homolog (S. cerevisiae)

**Calculated MW:**

1173 aa, 134 kDa

**Observed MW:**

130-150 kDa

**Purification Method:**

Antigen affinity purification

**Recommended Dilutions:**

WB 1:500-1:2400

IHC 1:20-1:200

IF 1:10-1:100

## Applications

**Tested Applications:**

IF/ICC, IHC, WB, ELISA

**Cited Applications:**

WB

**Species Specificity:**

human, mouse, rat

**Cited Species:**

human, mouse

**Positive Controls:**

**WB:** Raji cells, HEK-293 cells, HeLa cells, L02 cells, mouse lung tissue, mouse testis tissue

**IHC:** human breast cancer tissue, human colon cancer tissue

**IF:** HeLa cells,

**Note-IHC: suggested antigen retrieval with TE buffer pH 9.0; (\*) Alternatively, antigen retrieval may be performed with citrate buffer pH 6.0**

## Background Information

### Notable Publications

Author	Pubmed ID	Journal	Application
Liangde Zheng	31525119	Autophagy	WB
Gang Xiang	35551175	Cell Death Dis	WB
Zeyuan Zhong	31998129	Front Pharmacol	WB

## Storage

**Storage:**

Store at -20°C. Stable for one year after shipment.

**Storage Buffer:**

PBS with 0.02% sodium azide and 50% glycerol pH 7.3.

Aliquoting is unnecessary for -20°C storage

For technical support and original validation data for this product please contact:

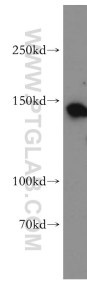
T: 4006900926

E: Proteintech-CN@ptglab.com

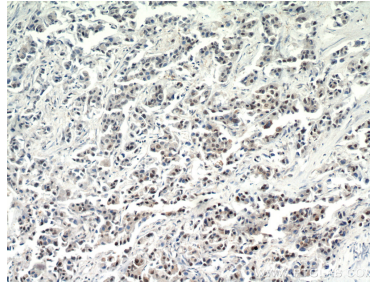
W: ptgcn.com

**This product is exclusively available under Proteintech Group brand and is not available to purchase from any other manufacturer.**

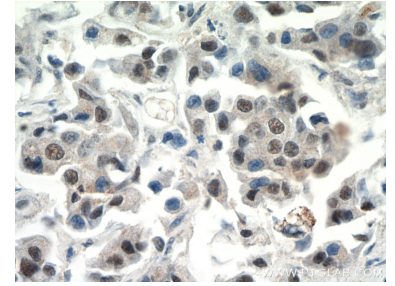
## Selected Validation Data



Raji cells were subjected to SDS PAGE followed by western blot with 21264-1-AP (CTR9 antibody) at dilution of 1:500 incubated at room temperature for 1.5 hours.



Immunohistochemical analysis of paraffin-embedded human breast cancer using 21264-1-AP (CTR9 antibody) at dilution of 1:200 (under 10x lens).



Immunohistochemical analysis of paraffin-embedded human breast cancer using 21264-1-AP (CTR9 antibody) at dilution of 1:200 (under 40x lens).



Immunofluorescent analysis of HeLa cells, using CTR9 antibody 21264-1-AP at 1:25 dilution and Rhodamine-labeled goat anti-rabbit IgG (red).