

For Research Use Only

# CLEC3A Polyclonal antibody, PBS Only

Catalog Number: 21262-1-PBS



## Basic Information

Catalog Number:

21262-1-PBS

Source:

Rabbit

Isotype:

IgG

Immunogen Catalog Number:

AG15667

GenBank Accession Number:

BC104415

GeneID (NCBI):

10143

UNIPROT ID:

O75596

Full Name:

C-type lectin domain family 3, member A

Calculated MW:

197 aa, 22 kDa

Observed MW:

23 kDa

Purification Method:

Antigen affinity purification

## Applications

Tested Applications:

WB, Indirect ELISA

Species Specificity:

human

## Background Information

CLEC3A (C-type lectin domain family 3 member A), also known as tetranectin-like protein or cartilage-derived C-type lectin, is a secreted glycoprotein belonging to the C-type lectin superfamily. It is encoded by the human gene CLEC3A (Gene ID: 10143, located at 16q22.1) and shares structural homology with tetranectin (CLEC3B). (PMID: 29146595)

## Storage

Storage:

Store at -80°C.

**The product is shipped with ice packs. Upon receipt, store it immediately at -80°C**

Storage Buffer:

PBS only, pH7.3

For technical support and original validation data for this product please contact:

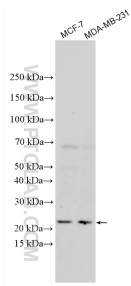
T: 4006900926

E: [Proteintech-CN@ptglab.com](mailto:Proteintech-CN@ptglab.com)

W: [ptgcn.com](http://ptgcn.com)

**This product is exclusively available under Proteintech Group brand and is not available to purchase from any other manufacturer.**

## Selected Validation Data



Various lysates were subjected to SDS PAGE followed by western blot with 21262-1-AP (CLEC3A antibody) at dilution of 1:1000 incubated at room temperature for 1.5 hours. This data was developed using the same antibody clone with 21262-1-PBS in a different storage buffer formulation.