

For Research Use Only

EPS15R Polyclonal antibody

Catalog Number: 21243-1-AP **2 Publications**



Basic Information

Catalog Number:

21243-1-AP

Size:

1000 µg/ml

Source:

Rabbit

Isotype:

IgG

Immunogen Catalog Number:

AG15735

GenBank Accession Number:

BC142716

GeneID (NCBI):

58513

UNIPROT ID:

Q9UBC2

Full Name:

epidermal growth factor receptor
pathway substrate 15-like 1

Calculated MW:

864 aa, 94 kDa

Observed MW:

94 kDa

Purification Method:

Antigen affinity purification

Recommended Dilutions:

WB 1:2000-1:14000

IF 1:50-1:500

Applications

Tested Applications:

IF/ICC, WB, ELISA

Cited Applications:

WB

Species Specificity:

human

Cited Species:

human, pig

Positive Controls:

WB : BxPC-3 cells, MCF-7 cells, HEK-293 cells, Y79 cells

IF : BxPC-3 cells,

Background Information

Notable Publications

Author	Pubmed ID	Journal	Application
Xiaofei Zhang	28190767	Mol Cell	WB
Xin Chen	37254454	Emerg Microbes Infect	WB

Storage

Storage:

Store at -20°C. Stable for one year after shipment.

Storage Buffer:

PBS with 0.02% sodium azide and 50% glycerol pH 7.3.

Aliquoting is unnecessary for -20°C storage

For technical support and original validation data for this product please contact:

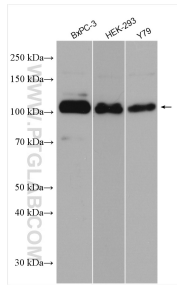
T: 4006900926

E: Proteintech-CN@ptglab.com

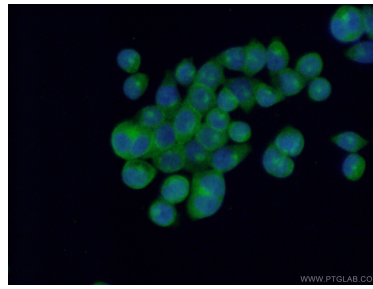
W: ptgcn.com

This product is exclusively available under Proteintech Group brand and is not available to purchase from any other manufacturer.

Selected Validation Data



Various lysates were subjected to SDS PAGE followed by western blot with 21243-1-AP (EPS15R antibody) at dilution of 1:7000 incubated at room temperature for 1.5 hours.



Immunofluorescent analysis of (4% PFA) fixed BxPC-3 cells using 21243-1-AP (EPS15R antibody) at dilution of 1:50 and Alexa Fluor 488-conjugated AffiniPure Goat Anti-Rabbit IgG(H+L).