

For Research Use Only

# TXNDC6 Polyclonal antibody, PBS Only

Catalog Number: 21235-1-PBS



## Basic Information

<b>Catalog Number:</b> 21235-1-PBS	<b>GenBank Accession Number:</b> BC107054	<b>Purification Method:</b> Antigen affinity purification
<b>Source:</b> Rabbit	<b>GeneID (NCBI):</b> 347736	
<b>Isotype:</b> IgG	<b>UNIPROT ID:</b> Q86XW9	
<b>Immunogen Catalog Number:</b> AG15719	<b>Full Name:</b> thioredoxin domain containing 6	
	<b>Calculated MW:</b> 263 aa, 30 kDa	
	<b>Observed MW:</b> 30 kDa	

## Applications

**Tested Applications:**  
WB, Indirect ELISA

**Species Specificity:**  
human

## Background Information

Thioredoxin domain-containing protein 6 (TXNDC6), also known as NME/NM23 family member 9 (NME9) or thioredoxin-like protein 2 (TxL-2), belongs to the group II NME/NDK (nucleoside diphosphate kinase) family and is a member of the thioredoxin (Trx) superfamily. Although the precise physiological function of TXNDC6 remains unclear, current evidence suggests it may act as a regulator of microtubule physiology.

## Storage

**Storage:**  
Store at -80°C.  
**The product is shipped with ice packs. Upon receipt, store it immediately at -80°C**

**Storage Buffer:**  
PBS only, pH7.3

For technical support and original validation data for this product please contact:

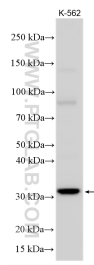
T: 4006900926

E: [Proteintech-CN@ptglab.com](mailto:Proteintech-CN@ptglab.com)

W: [ptgcn.com](http://ptgcn.com)

**This product is exclusively available under Proteintech Group brand and is not available to purchase from any other manufacturer.**

## Selected Validation Data



K-562 cell lysates were subjected to SDS PAGE followed by western blot with 21235-1-AP (TXNDC6 antibody) at dilution of 1:800 incubated at room temperature for 1.5 hours. This data was developed using the same antibody clone with 21235-1-PBS in a different storage buffer formulation.