

For Research Use Only

SP6 Polyclonal antibody, PBS Only

Catalog Number: 21234-1-PBS

Featured Product



Basic Information

Catalog Number:

21234-1-PBS

Source:

Rabbit

Isotype:

IgG

Immunogen Catalog Number:

AG15707

GenBank Accession Number:

BC103951

GeneID (NCBI):

80320

UNIPROT ID:

Q3SY56

Full Name:

Sp6 transcription factor

Calculated MW:

376 aa, 40 kDa

Purification Method:

Antigen affinity purification

Applications

Tested Applications:

WB, IHC, IF/ICC, ELISA

Species Specificity:

human, mouse, rat

Background Information

SP6 (chromosome 17) is a 376 amino acid protein, which localizes in nucleus. SP6 is a transcription factor of the SP/KLF family and an indispensable regulator of the morphological dynamics of ameloblast differentiation during tooth development. The levels of sp6 protein expressed in various tissues in the embryo. This antibody detects the SP6 protein. It can't detect the KLF14/BTEB5.

This antibody was previously listed as a KLF14 antibody, because the SP6 gene on chromosome 17q21.32 has been referred to as KLF14 in the literature. SP6 should not be confused with the KLF14 gene on chromosome 7q32.2.

Storage

Storage:

Store at -80°C.

The product is shipped with ice packs. Upon receipt, store it immediately at -80°C

Storage Buffer:

PBS only, pH7.3

For technical support and original validation data for this product please contact:

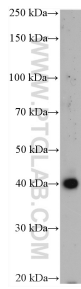
T: 4006900926

E: Proteintech-CN@ptglab.com

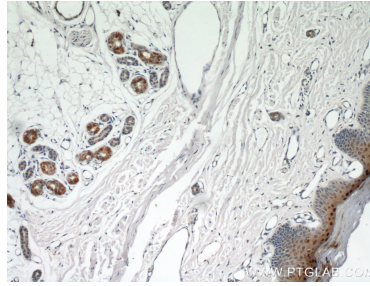
W: ptgcn.com

This product is exclusively available under Proteintech Group brand and is not available to purchase from any other manufacturer.

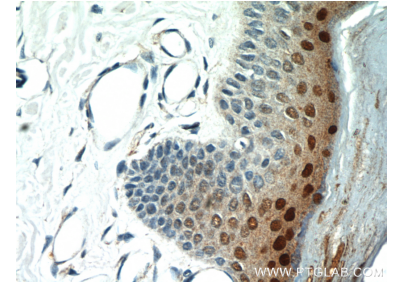
Selected Validation Data



fetal human brain tissue were subjected to SDS PAGE followed by western blot with 21234-1-AP (KLF 14 antibody) at dilution of 1:300 incubated at room temperature for 1.5 hours. This data was developed using the same antibody clone with 21234-1-PBS in a different storage buffer formulation.



Immunohistochemical analysis of paraffin-embedded human skin using 21234-1-AP (KLF14 antibody) at dilution of 1:100 (under 10x lens). This data was developed using the same antibody clone with 21234-1-PBS in a different storage buffer formulation.



Immunohistochemical analysis of paraffin-embedded human skin using 21234-1-AP (KLF14 antibody) at dilution of 1:100 (under 40x lens). This data was developed using the same antibody clone with 21234-1-PBS in a different storage buffer formulation.



Immunofluorescent analysis of (4% PFA) fixed Caco-2 cells using SP6 antibody (21234-1-AP) at dilution of 1:200 and CoralLite®488-Conjugated AffiniPure Goat Anti-Rabbit IgG(H+L). This data was developed using the same antibody clone with 21234-1-PBS in a different storage buffer formulation.