

For Research Use Only

# CPLX4 Polyclonal antibody

Catalog Number: 21222-1-AP

Featured Product



## Basic Information

**Catalog Number:**

21222-1-AP

**Size:**

1000 µg/ml

**Source:**

Rabbit

**Isotype:**

IgG

**Immunogen Catalog Number:**

AG15661

**GenBank Accession Number:**

BC106887

**GeneID (NCBI):**

339302

**UNIPROT ID:**

Q7Z7G2

**Full Name:**

complexin 4

**Calculated MW:**

160 aa, 18 kDa

**Observed MW:**

21-23 kDa

**Purification Method:**

Antigen affinity purification

**Recommended Dilutions:**

WB 1:500-1:3000

IP 0.5-4.0 µg for 1.0-3.0 mg of total protein lysate

IHC 1:50-1:500

## Applications

**Tested Applications:**

IHC, IP, WB, ELISA

**Species Specificity:**

human, mouse, rat

**Note-IHC: suggested antigen retrieval with TE buffer pH 9.0; (\*) Alternatively, antigen retrieval may be performed with citrate buffer pH 6.0**

**Positive Controls:**

WB : Y79 cells,

IP : Y79 cells,

IHC : mouse eye tissue, human brain tissue

## Background Information

### Storage

**Storage:**

Store at -20°C. Stable for one year after shipment.

**Storage Buffer:**

PBS with 0.02% sodium azide and 50% glycerol pH 7.3.

Aliquoting is unnecessary for -20°C storage

For technical support and original validation data for this product please contact:

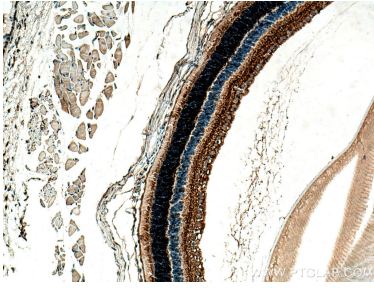
T: 4006900926

E: [Proteintech-CN@ptglab.com](mailto:Proteintech-CN@ptglab.com)

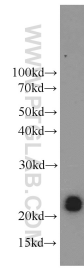
W: [ptgcn.com](http://ptgcn.com)

This product is exclusively available under Proteintech Group brand and is not available to purchase from any other manufacturer.

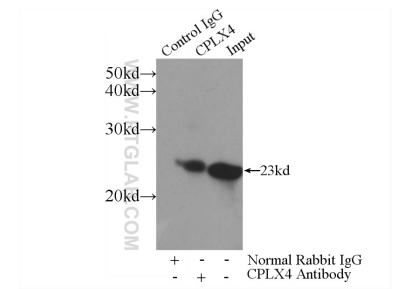
## Selected Validation Data



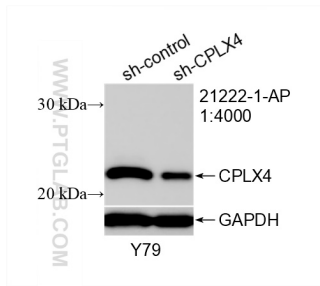
Immunohistochemical analysis of paraffin-embedded mouse eye tissue slide using 21222-1-AP (CPLX4 antibody) at dilution of 1:200 (under 10x lens). Heat mediated antigen retrieval with Tris-EDTA buffer (pH 9.0).



Y79 cells were subjected to SDS PAGE followed by western blot with 21222-1-AP (CPLX4 antibody) at dilution of 1:1500 incubated at room temperature for 1.5 hours.



IP result of anti-CPLX4 (IP:21222-1-AP, 3ug; Detection:21222-1-AP 1:1000) with Y79 cells lysate 960ug.



WB result of CPLX4 antibody (21222-1-AP; 1:400; incubated at room temperature for 1.5 hours) with sh-Control and sh-CPLX4 transfected Y79 cells.