

For Research Use Only

# ATOH1 Polyclonal antibody

Catalog Number: 21215-1-AP **30 Publications**



## Basic Information

<b>Catalog Number:</b> 21215-1-AP	<b>GenBank Accession Number:</b> BC069594	<b>Purification Method:</b> Antigen affinity purification
<b>Size:</b> 500 µg/ml	<b>GeneID (NCBI):</b> 474	<b>Recommended Dilutions:</b> WB 1:5000-1:50000 IF 1:400-1:1600
<b>Source:</b> Rabbit	<b>UNIPROT ID:</b> Q92858	
<b>Isotype:</b> IgG	<b>Full Name:</b> atonal homolog 1 (Drosophila)	
<b>Immunogen Catalog Number:</b> AG15615	<b>Calculated MW:</b> 354 aa, 38 kDa	
	<b>Observed MW:</b> 38-40 kDa	

## Applications

<b>Tested Applications:</b> IF/ICC, WB, ELISA	<b>Positive Controls:</b> WB : Neuro-2a cells, mouse brain tissue, HepG2 cells, mouse small intestine tissue, rat brain tissue IF : HepG2 cells, mouse brain tissue
<b>Cited Applications:</b> ChIP, IF, IHC, WB	
<b>Species Specificity:</b> human, mouse, rat	
<b>Cited Species:</b> human, mouse, monkey	

## Background Information

ATOH1, also named as Protein atonal homolog 1 or BHLHA14, is a 364 amino acid protein, which contains 1 bHLH (basic helix-loop-helix) domain. ATOH1, as a transcriptional regulator in the nucleus activates E box-dependent transcription in collaboration with TCF3/E47, but the activity is completely antagonized by the negative regulator of neurogenesis HES1. ATOH1 plays a role in the differentiation of subsets of neural cells by activating E box-dependent transcription.

## Notable Publications

Author	Pubmed ID	Journal	Application
Haoran Zhang	36147660	Comput Struct Biotechnol J	WB
Tianli Qin	36252002	Proc Natl Acad Sci U S A	IF
Levi Todd	34686336	Cell Rep	IF

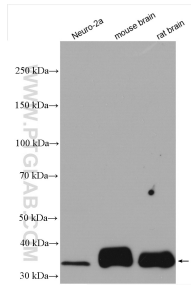
## Storage

**Storage:**  
Store at -20°C. Stable for one year after shipment.  
**Storage Buffer:**  
PBS with 0.02% sodium azide and 50% glycerol pH 7.3.  
Aliquoting is unnecessary for -20°C storage

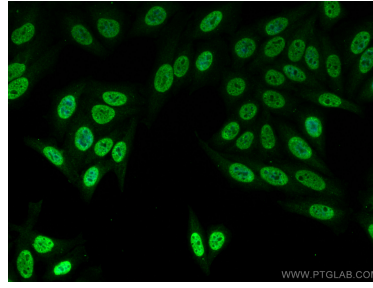
For technical support and original validation data for this product please contact:  
T: 4006900926 E: Proteintech-CN@ptglab.com W: ptgcn.com

This product is exclusively available under Proteintech Group brand and is not available to purchase from any other manufacturer.

## Selected Validation Data



Various lysates were subjected to SDS PAGE followed by western blot with 21215-1-AP (ATOH1 antibody) at dilution of 1:10000 incubated at room temperature for 1.5 hours.



Immunofluorescent analysis of (4% PFA) fixed HepG2 cells using ATOH1 antibody (21215-1-AP) at dilution of 1:800 and CoraLite®488-Conjugated AffiniPure Goat Anti-Rabbit IgG(H+L).