

For Research Use Only

KLHL4 Polyclonal antibody

Catalog Number: 21191-1-AP



Basic Information

Catalog Number: 21191-1-AP	GenBank Accession Number: BC142652	Purification Method: Antigen affinity purification
Size: 400 µg/ml	GeneID (NCBI): 56062	Recommended Dilutions: WB 1:500-1:2000 IHC 1:20-1:200
Source: Rabbit	UNIPROT ID: Q9C0H6	
Isotype: IgG	Full Name: kelch-like 4 (Drosophila)	
Immunogen Catalog Number: AG15529	Calculated MW: 720 aa, 81 kDa	
	Observed MW: 75-80 kDa	

Applications

Tested Applications:

IHC, WB, ELISA

Species Specificity:

human, mouse, rat

Note-IHC: suggested antigen retrieval with TE buffer pH 9.0; (*) Alternatively, antigen retrieval may be performed with citrate buffer pH 6.0

Positive Controls:

WB : HeLa cells,

IHC : human brain tissue,

Background Information

Storage

Storage:

Store at -20°C. Stable for one year after shipment.

Storage Buffer:

PBS with 0.02% sodium azide and 50% glycerol pH 7.3.

Aliquoting is unnecessary for -20°C storage

For technical support and original validation data for this product please contact:

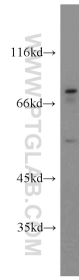
T: 4006900926

E: Proteintech-CN@ptglab.com

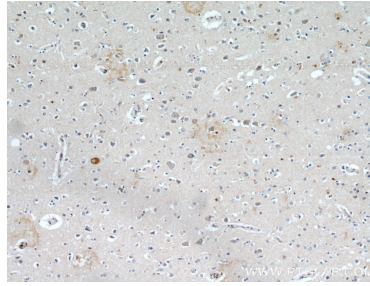
W: ptgcn.com

This product is exclusively available under Proteintech Group brand and is not available to purchase from any other manufacturer.

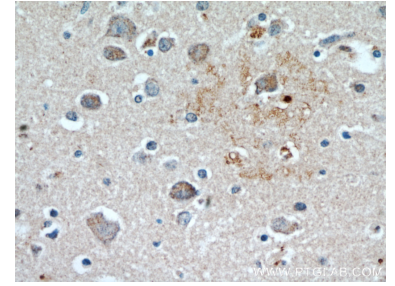
Selected Validation Data



HeLa cells were subjected to SDS PAGE followed by western blot with 21191-1-AP (KLHL4 antibody) at dilution of 1:600 incubated at room temperature for 1.5 hours.



Immunohistochemical analysis of paraffin-embedded human brain using 21191-1-AP (KLHL4 antibody) at dilution of 1:50 (under 10x lens).



Immunohistochemical analysis of paraffin-embedded human brain using 21191-1-AP (KLHL4 antibody) at dilution of 1:50 (under 40x lens).