

For Research Use Only

# KIF5A Polyclonal antibody, PBS Only

Catalog Number: 21186-1-PBS

Featured Product



## Basic Information

Catalog Number:

21186-1-PBS

Concentration:

1 mg/ml

Source:

Rabbit

Isotype:

IgG

Immunogen Catalog Number:

AG15518

GenBank Accession Number:

BC146670

GeneID (NCBI):

3798

UNIPROT ID:

Q12840

Full Name:

kinesin family member 5A

Calculated MW:

1032 aa, 117 kDa

Observed MW:

118-120 kDa

Purification Method:

Antigen affinity purification

## Applications

Tested Applications:

WB, IHC, IF/ICC, IP, Indirect ELISA

Species Specificity:

human, mouse, rat

## Background Information

Kinesin superfamily proteins (KIFs) are microtubule-based molecular motors essential for the intracellular transport of various cargos, including organelles, proteins, and RNAs. KIF5A is expressed exclusively in neurons and transports neuronal cargos into axons and dendrites. KIF5A mutations have been associated with Charcot-Marie-Tooth Type 2, an axonal peripheral neuropathy characterized by progressive loss of peripheral sensation and muscle wasting.

## Storage

Storage:

Store at -80°C.

The product is shipped with ice packs. Upon receipt, store it immediately at -80°C

Storage Buffer:

PBS Only

For technical support and original validation data for this product please contact:

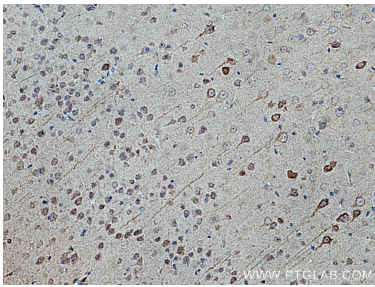
T: 4006900926

E: [Proteintech-CN@ptglab.com](mailto:Proteintech-CN@ptglab.com)

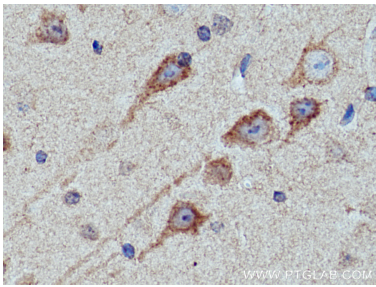
W: [ptgcn.com](http://ptgcn.com)

This product is exclusively available under Proteintech Group brand and is not available to purchase from any other manufacturer.

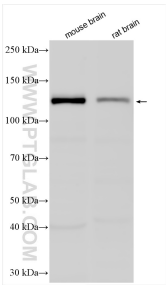
Selected Validation Data



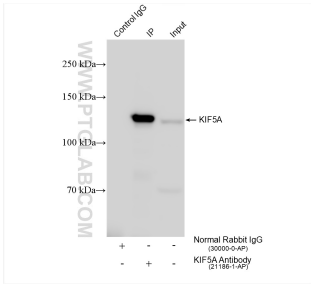
Immunohistochemical analysis of paraffin-embedded mouse brain tissue slide using 21186-1-AP (KIF5A antibody) at dilution of 1:200 (under 10x lens). Heat mediated antigen retrieval with Tris-EDTA buffer (pH 9.0). This data was developed using the same antibody clone with 21186-1-PBS in a different storage buffer formulation.



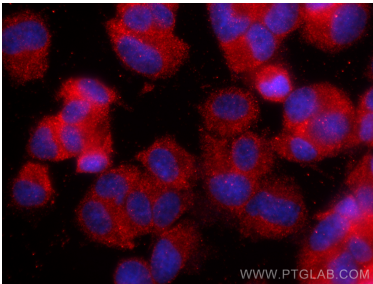
Immunohistochemical analysis of paraffin-embedded mouse brain tissue slide using 21186-1-AP (KIF5A antibody) at dilution of 1:200 (under 40x lens). Heat mediated antigen retrieval with Tris-EDTA buffer (pH 9.0). This data was developed using the same antibody clone with 21186-1-PBS in a different storage buffer formulation.



Various lysates were subjected to SDS PAGE followed by western blot with 21186-1-AP (KIF5A antibody) at dilution of 1:500 incubated at room temperature for 1.5 hours. This data was developed using the same antibody clone with 21186-1-PBS in a different storage buffer formulation.



IP result of anti-KIF5A (IP: 21186-1-AP, 4ug; Detection: 21186-1-AP 1:2000) with mouse brain tissue lysate 1840 ug. This data was developed using the same antibody clone with 21186-1-PBS in a different storage buffer formulation.



Immunofluorescent analysis of (4% PFA) fixed PC-12 cells using KIF5A antibody (21186-1-AP) at dilution of 1:200 and CoraLite®594-Conjugated Goat Anti-Rabbit IgG(H+L) (SA00013-4). This data was developed using the same antibody clone with 21186-1-PBS in a different storage buffer formulation.