

# CBLL1 Polyclonal antibody

Catalog Number: 21179-1-AP

Featured Product

10 Publications

## Basic Information

## Catalog Number:

21179-1-AP

## Size:

800 µg/ml

## Source:

Rabbit

## Isotype:

IgG

## Immunogen Catalog Number:

AG15463

## GenBank Accession Number:

BC027460

## GeneID (NCBI):

79872

## UNIPROT ID:

Q75N03

## Full Name:

Cas-Br-M (murine) ecotropic retroviral transforming sequence-like 1

## Calculated MW:

491 aa, 55 kDa

## Observed MW:

55-60 kDa

## Purification Method:

Antigen affinity purification

## Recommended Dilutions:

WB 1:1000-1:6000

IHC 1:50-1:500

IF/ICC 1:200-1:800

## Applications

## Tested Applications:

WB, IHC, IF/ICC, ELISA

## Cited Applications:

WB, IHC, IF

## Species Specificity:

human, mouse

## Cited Species:

human, mouse

**Note-IHC: suggested antigen retrieval with TE buffer pH 9.0; (\*) Alternatively, antigen retrieval may be performed with citrate buffer pH 6.0**

## Positive Controls:

WB : HEK-293 cells, HeLa cells, MCF-7 cells

IHC : human colon cancer tissue, human lung cancer tissue

IF/ICC : HepG2 cells,

## Background Information

Cbl proto - oncogene E3 ubiquitin protein ligase - like 1, RNF188, Hakai (CBLL1) is an evolutionarily conserved E3 ubiquitin ligase containing a RING - finger domain. CBLL1 contains a typical RING - finger, short pTyr - binding domain, and proline - rich domain. CBLL1 expression is upregulated in human colon and gastric cancer tissues, and CBLL1 has been reported to induce anchorage - dependent cell growth. CBLL1 immunostaining was observed in both the nuclei and cytoplasm of cancer cells. (PMID: 31124298, PMID: 31646569, PMID: 21191016)

## Notable Publications

Author	Pubmed ID	Journal	Application
Kyoko Sako-Kubota	25253721	Mol Biol Cell	WB
Zi Liu	36071249	Med Oncol	WB
Chunmei Hu	34764728	J Ginseng Res	IF

## Storage

## Storage:

Store at -20°C. Stable for one year after shipment.

## Storage Buffer:

PBS with 0.02% sodium azide and 50% glycerol pH 7.3.

Aliquoting is unnecessary for -20°C storage

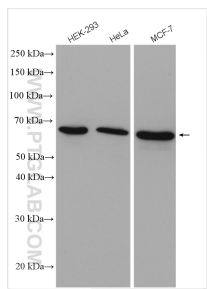
For technical support and original validation data for this product please contact:

T: 4006900926

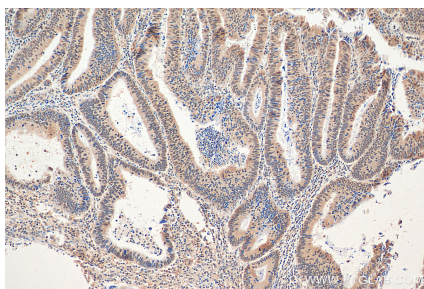
E: [Proteintech-CN@ptglab.com](mailto:Proteintech-CN@ptglab.com)W: [ptgcn.com](http://ptgcn.com)

**This product is exclusively available under Proteintech Group brand and is not available to purchase from any other manufacturer.**

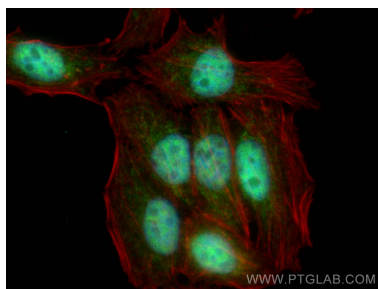
## Selected Validation Data



Various lysates were subjected to SDS PAGE followed by western blot with 21179-1-AP (CBL1 antibody) at dilution of 1:3000 incubated at room temperature for 1.5 hours.



Immunohistochemical analysis of paraffin-embedded human colon cancer tissue slide using 21179-1-AP (CBL1 antibody) at dilution of 1:200 (under 10x lens). Heat mediated antigen retrieval with Tris-EDTA buffer (pH 9.0).



Immunofluorescent analysis of (4% PFA) fixed HepG2 cells using CBL1 antibody (21179-1-AP) at dilution of 1:400 and CoraLite®488-Conjugated AffiniPure Goat Anti-Rabbit IgG(H+L), CL594-Phalloidin (red).