

For Research Use Only

Kiz Polyclonal antibody

Catalog Number: 21177-1-AP

5 Publications



Basic Information

Catalog Number:

21177-1-AP

Source:

Rabbit

Isotype:

IgG

Immunogen Catalog Number:

AG15454

GenBank Accession Number:

BC045826

GeneID (NCBI):

55857

UNIPROT ID:

Q2M2Z5

Full Name:

non-protein coding RNA 153

Calculated MW:

673 aa, 75 kDa

Observed MW:

90-100 kDa

Purification Method:

Antigen affinity purification

Recommended Dilutions:

WB: 1:500-1:3000

IP: 0.5-4.0 ug for 1.0-3.0 mg of total protein lysate

IHC: 1:20-1:200

IF/ICC: 1:500-1:2000

Applications

Tested Applications:

WB, IHC, IF/ICC, IP, ELISA

Cited Applications:

WB, IF

Species Specificity:

human

Cited Species:

human, mouse

Note-IHC: suggested antigen retrieval with TE buffer pH 9.0; (*) Alternatively, antigen retrieval may be performed with citrate buffer pH 6.0

Positive Controls:

WB : HeLa cells, human brain tissue

IP : HeLa cells,

IHC : human testis tissue,

IF/ICC : HeLa cells, hTERT-RPE1 cells

Background Information

Notable Publications

Author	Pubmed ID	Journal	Application
Tianyu Wu	36395215	Science	IF
Yang-In Yim	40440343	PLoS One	WB,IF
Tomoharu Kanie	39882855	Elife	IF

Storage

Storage:

Store at -20°C. Stable for one year after shipment.

Storage Buffer:

PBS with 0.02% sodium azide and 50% glycerol, pH7.3

Aliquoting is unnecessary for -20°C storage

For technical support and original validation data for this product please contact:

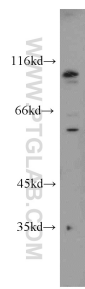
T: 4006900926

E: Proteintech-CN@ptglab.com

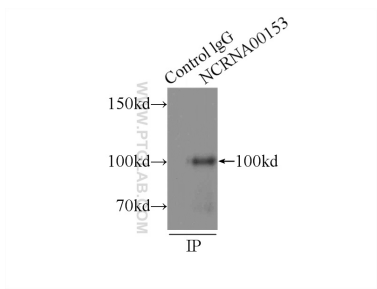
W: ptgcn.com

This product is exclusively available under Proteintech Group brand and is not available to purchase from any other manufacturer.

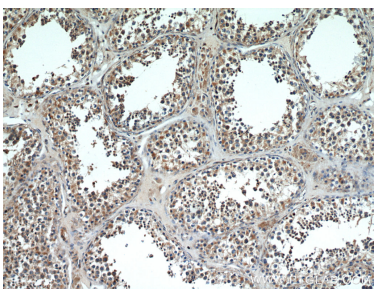
Selected Validation Data



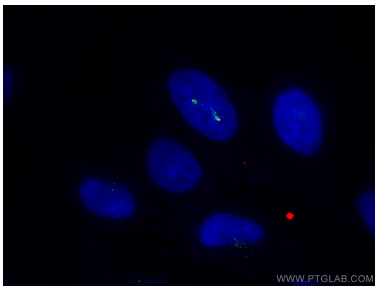
HeLa cells were subjected to SDS PAGE followed by western blot with 21177-1-AP (C20orf19 antibody) at dilution of 1:1000 incubated at room temperature for 1.5 hours.



IP result of anti-Kiz (IP:21177-1-AP, 3ug; Detection:21177-1-AP 1:500) with HeLa cells lysate 2000ug.



Immunohistochemical analysis of paraffin-embedded human testis using 21177-1-AP (C20orf19 antibody) at dilution of 1:100 (under 10x lens).



Immunofluorescent analysis of (4% PFA) fixed HeLa cells using Kiz antibody (21177-1-AP) at dilution of 1:1000 and CoraLite®488-Conjugated Goat Anti-Rabbit IgG(H+L), Gamma Tubulin antibody (66320-1-Ig, Clone: 3F9H8, red).