

For Research Use Only

PDP1 Polyclonal antibody

Catalog Number: 21176-1-AP **5 Publications**



Basic Information

Catalog Number:

21176-1-AP

Size:

300 µg/ml

Source:

Rabbit

Isotype:

IgG

Immunogen Catalog Number:

AG15453

GenBank Accession Number:

BC047619

GeneID (NCBI):

54704

UNIPROT ID:

Q9P0J1

Full Name:

protein phosphatase 2C, magnesium-dependent, catalytic subunit

Calculated MW:

537 aa, 61 kDa

Observed MW:

53-61 kDa

Purification Method:

Antigen affinity purification

Recommended Dilutions:

WB 1:500-1:1000

IP 0.5-4.0 µg for 1.0-3.0 mg of total protein lysate

IHC 1:50-1:500

Applications

Tested Applications:

IHC, IP, WB, ELISA

Cited Applications:

IHC, WB

Species Specificity:

human, mouse

Cited Species:

human, mouse

Note-IHC: suggested antigen retrieval with TE buffer pH 9.0; (*) Alternatively, antigen retrieval may be performed with citrate buffer pH 6.0

Positive Controls:

WB: PC-3 cells, mouse skeletal muscle tissue, mouse brain tissue, mouse heart tissue, mouse liver tissue

IP: mouse brain tissue,

IHC: human prostate cancer tissue, human thyroid cancer tissue, mouse skeletal muscle tissue

Background Information

Notable Publications

Author	Pubmed ID	Journal	Application
Xiao Meng Zhang	33062708	J Diabetes Res	WB
Yingying Shi	34489398	Cell Death Dis	WB
Jian-Sha Li	31346986	Curr Med Sci	WB

Storage

Storage:

Store at -20°C. Stable for one year after shipment.

Storage Buffer:

PBS with 0.02% sodium azide and 50% glycerol pH 7.3.

Aliquoting is unnecessary for -20°C storage

For technical support and original validation data for this product please contact:

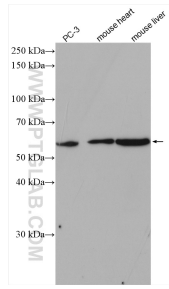
T: 4006900926

E: Proteintech-CN@ptglab.com

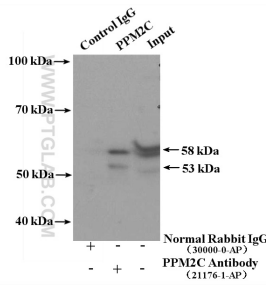
W: ptgcn.com

This product is exclusively available under Proteintech Group brand and is not available to purchase from any other manufacturer.

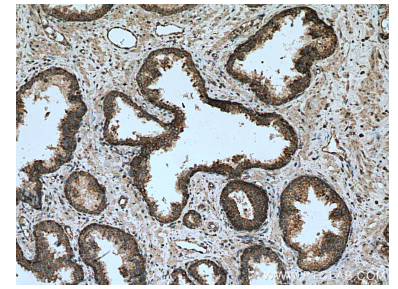
Selected Validation Data



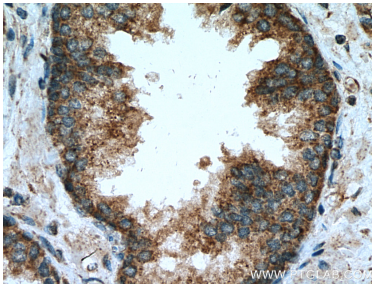
Various lysates were subjected to SDS PAGE followed by western blot with 21176-1-AP (PPM2C antibody) at dilution of 1:600 incubated at room temperature for 1.5 hours.



IP result of anti-PDP1 (IP:21176-1-AP, 4ug; Detection:21176-1-AP 1:300) with mouse brain tissue lysate 5200ug.



Immunohistochemical analysis of paraffin-embedded human prostate cancer tissue slide using 21176-1-AP (PPM2C antibody) at dilution of 1:200 (under 10x lens). Heat mediated antigen retrieval with Tris-EDTA buffer (pH 9.0).



Immunohistochemical analysis of paraffin-embedded human prostate cancer tissue slide using 21176-1-AP (PPM2C antibody) at dilution of 1:200 (under 40x lens). Heat mediated antigen retrieval with Tris-EDTA buffer (pH 9.0).