

For Research Use Only

SERPINB7 Polyclonal antibody

Catalog Number: 21170-1-AP



Basic Information

Catalog Number: 21170-1-AP	GenBank Accession Number: BC069417	Purification Method: Antigen affinity purification
Source: Rabbit	GeneID (NCBI): 8710	Recommended Dilutions: WB: 1:1000-1:8000 IF/ICC: 1:200-1:800
Isotype: IgG	UNIPROT ID: O75635	
Immunogen Catalog Number: AG15394	Full Name: serpin peptidase inhibitor, clade B (ovalbumin), member 7	
	Calculated MW: 380 aa, 43 kDa	
	Observed MW: 43-45 kDa	

Applications

Tested Applications: WB, IF/ICC, ELISA	Positive Controls:
Species Specificity: human, mouse, rat	WB: mouse kidney tissue, mouse liver tissue, rat liver tissue, rat kidney tissue IF/ICC: HaCaT cells,

Background Information

Serine protease inhibitor B7 (SERPINB7) is also named Serpin B7, Megsin and TP55. SerpinB7 is identified as a skin-specific endogenous protease inhibitor. SerpinB7 is upregulated in diabetic nephropathy and induces progressive mesangial expansion (PMID: 11877466). SERPINB7 is abundantly expressed in keratinocytes, with particularly high levels in the stratum corneum and stratum granulosum of the epidermis (PMID: 41469525). SERPINB7 promotes keratinocyte differentiation and dampens inflammation in psoriasis in a calcium-dependent manner (PMID: 35864103). SERPINB7 is expressed mostly in renal mesangial cells, and its expression is significantly increased in renal tissues of IgA and diabetic nephropathies. SERPINB7 regulates cell proliferation, signal transduction, and extracellular matrix metabolism (PMID: 37809412).

Storage

Storage:
Store at -20°C. Stable for one year after shipment.
Storage Buffer:
PBS with 0.02% sodium azide and 50% glycerol, pH7.3
Aliquoting is unnecessary for -20°C storage

For technical support and original validation data for this product please contact:

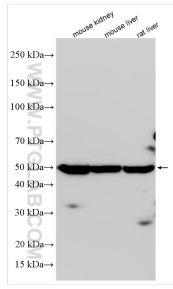
T: 4006900926

E: Proteintech-CN@ptglab.com

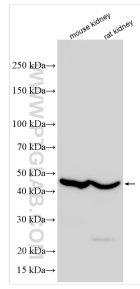
W: ptgcn.com

This product is exclusively available under Proteintech Group brand and is not available to purchase from any other manufacturer.

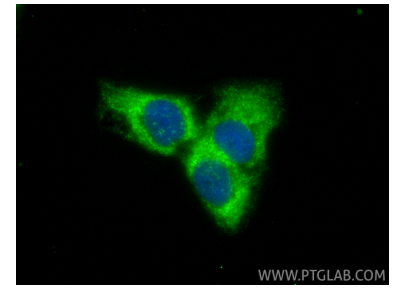
Selected Validation Data



Various lysates were subjected to SDS PAGE followed by western blot with 21170-1-AP (SERPINB7 antibody) at dilution of 1:1500 incubated at room temperature for 1.5 hours.



Various lysates were subjected to SDS PAGE followed by western blot with 21170-1-AP (SERPINB7 antibody) at dilution of 1:4000 incubated at room temperature for 1.5 hours.



Immunofluorescent analysis of (-20°C Methanol) fixed HaCaT cells using SERPINB7 antibody (21170-1-AP) at dilution of 1:400 and CoraLite@488-Conjugated Goat Anti-Rabbit IgG(H+L) (SA00013-2).