

For Research Use Only

MKL1/MRTF-A Polyclonal antibody

Catalog Number: 21166-1-AP

Featured Product

35 Publications



Basic Information

Catalog Number:

21166-1-AP

Concentration:

1000 ug/ml

Source:

Rabbit

Isotype:

IgG

Immunogen Catalog Number:

AG15240

GenBank Accession Number:

BC115039

GeneID (NCBI):

57591

UNIPROT ID:

Q969V6

Full Name:

megakaryoblastic leukemia
(translocation) 1

Calculated MW:

931 aa, 99 kDa

Observed MW:

145 kDa

Purification Method:

Antigen affinity purification

Recommended Dilutions:

WB 1:1000-1:6000

IHC 1:50-1:500

IF/ICC 1:20-1:200

Applications

Tested Applications:

WB, IHC, IF/ICC, ELISA

Cited Applications:

WB, IHC, IF, ChIP

Species Specificity:

human, mouse

Cited Species:

human, mouse, rat

**Note-IHC: suggested antigen retrieval with
TE buffer pH 9.0; (*) Alternatively, antigen
retrieval may be performed with citrate
buffer pH 6.0**

Positive Controls:

WB : HEK-293 cells, HeLa cells, HepG2 cells

IHC : human small intestine tissue, human tonsillitis
tissue, human liver cancer tissue

IF/ICC : HeLa cells,

Background Information

Megakaryocytic leukemia 1 (MKL1), also known as myocardin-related transcription factor A (MRTF-A), is a transcriptional regulator involved in a wide range of pathophysiological processes in the cardiovascular system. MKL1 was initially identified as a co-factor for serum response factor (SRF) to regulate the transcription of contractile genes. Forced expression of MKL1 in non-muscle cells leads to robust up-regulation of contractile genes (PMID: 36587486, PMID: 37199168, PMID: 39222836). MKL1 is ubiquitously expressed and has been detected in lung, placenta, small intestine, liver, kidney, spleen, thymus, colon, muscle, heart, and brain. The molecular weight of MKL1 observed is consistent with what has been described in the literature (PMID: 34944031).

Notable Publications

Author	Pubmed ID	Journal	Application
Fu Du	34548615	Exp Mol Med	WB,IHC,IF,ChIP
Teng Wu	33015041	Front Cell Dev Biol	WB,IF,IHC
Xin Dong	33061800	Int J Biol Sci	WB

Storage

Storage:

Store at -20°C. Stable for one year after shipment.

Storage Buffer:

PBS with 0.02% sodium azide and 50% glycerol, pH7.3

Aliquoting is unnecessary for -20°C storage

For technical support and original validation data for this product please contact:

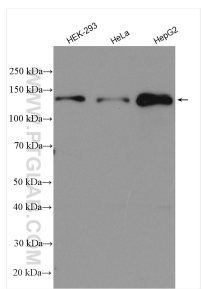
T: 4006900926

E: Proteintech-CN@ptglab.com

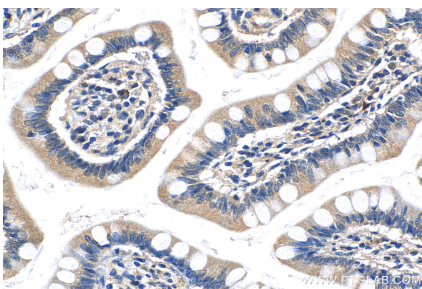
W: ptgcn.com

This product is exclusively available under Proteintech Group brand and is not available to purchase from any other manufacturer.

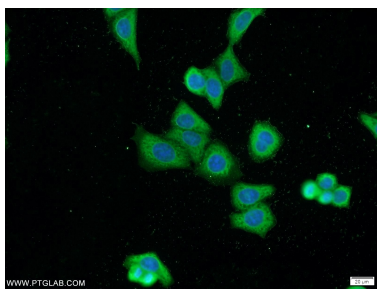
Selected Validation Data



Various lysates were subjected to SDS PAGE followed by western blot with 21166-1-AP (MKL1/MRTF-A antibody) at dilution of 1:3000 incubated at room temperature for 1.5 hours.



Immunohistochemical analysis of paraffin-embedded human small intestine tissue slide using 21166-1-AP (MKL1/MRTF-A antibody) at dilution of 1:200 (under 40x lens).



Immunofluorescent analysis of HeLa cells using 21166-1-AP (MKL1/MRTF-A antibody) at dilution of 1:50 and Alexa Fluor 488-conjugated AffiniPure Goat Anti-Rabbit IgG(H+L).