

# KIR2DS4 Polyclonal antibody

Catalog Number: 21152-1-AP

## Basic Information

**Catalog Number:**

21152-1-AP

**Size:**

533 µg/ml

**Source:**

Rabbit

**Isotype:**

IgG

**Immunogen Catalog Number:**

AG15711

**GenBank Accession Number:**

BC096694

**GeneID (NCBI):**

3809

**UNIPROT ID:**

P43632

**Full Name:**

killer cell immunoglobulin-like receptor, two domains, short cytoplasmic tail, 4

**Calculated MW:**

304 aa, 34 kDa

**Observed MW:**

33 kDa

**Purification Method:**

Antigen affinity purification

**Recommended Dilutions:**

WB 1:1000-1:4000

IF/ICC 1:10-1:100

## Applications

**Tested Applications:**

WB, IF/ICC, ELISA

**Species Specificity:**

human

**Positive Controls:**

WB : HL-60 cells, Jurkat cells

IF/ICC : HepG2 cells,

## Background Information

KIR2DS4 (also known as CD158i) is a member of the killer cell immunoglobulin-like receptor (KIR) family. KIRs are transmembrane glycoproteins expressed by natural killer cells and subsets of T cells. KIRs are mainly involved in inhibiting NK killing (inhibitory KIRs) via interaction with MHC class I molecules. KIR2DS4 has been reported to be an activating KIR and recognize the HLA-Cw4 protein.

## Storage

**Storage:**

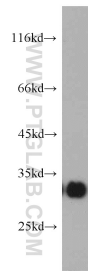
Store at -20°C. Stable for one year after shipment.

**Storage Buffer:**

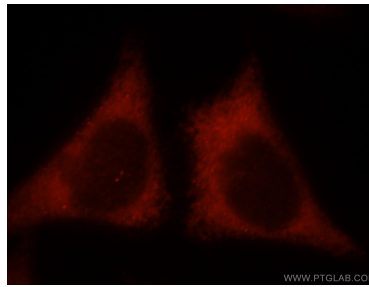
PBS with 0.02% sodium azide and 50% glycerol pH 7.3.

Aliquoting is unnecessary for -20°C storage

## Selected Validation Data



HL-60 cells were subjected to SDS PAGE followed by western blot with 21152-1-AP (KIR2DS4 antibody) at dilution of 1:500 incubated at room temperature for 1.5 hours.



Immunofluorescent analysis of HepG2 cells, using KIR2DS4 antibody 21152-1-AP at 1:25 dilution and Rhodamine-labeled goat anti-rabbit IgG (red).