

For Research Use Only

TACO1/CCDC44 Polyclonal antibody

Catalog Number: 21147-1-AP

Featured Product

10 Publications



Basic Information

Catalog Number:

21147-1-AP

Size:

700 µg/ml

Source:

Rabbit

Isotype:

IgG

Immunogen Catalog Number:

AG15688

GenBank Accession Number:

BC007744

GeneID (NCBI):

51204

UNIPROT ID:

Q9BSH4

Full Name:

coiled-coil domain containing 44

Calculated MW:

297 aa, 32 kDa

Observed MW:

30-32 kDa

Purification Method:

Antigen affinity purification

Recommended Dilutions:

WB 1:500-1:2000

IP 0.5-4.0 µg for 1.0-3.0 mg of total protein lysate

IHC 1:20-1:200

Applications

Tested Applications:

WB, IP, IHC, ELISA

Cited Applications:

WB, IHC, IP, RIP

Species Specificity:

human, mouse, rat

Cited Species:

human, mouse

Note-IHC: suggested antigen retrieval with *TE buffer pH 9.0*; (*) Alternatively, antigen retrieval may be performed with *citrate buffer pH 6.0*

Positive Controls:

WB : HepG2 cells, HeLa cells, mouse heart, rat heart

IP : mouse liver tissue,

IHC : human kidney tissue, human brain tissue

Background Information

TACO1 (translational activator of cytochrome oxidase subunit I) is required for COXI translation. Mutations in TACO1 cause Leigh syndrome (LS) and cytochrome c oxidase deficiency. (27319982)

Notable Publications

Author	Pubmed ID	Journal	Application
Nicola Ferreira	31721250	EMBO J	WB
Tara R Richman	27319982	Nat Commun	WB
Xiaorong Zhang	25083871	Cell	WB

Storage

Storage:

Store at -20°C. Stable for one year after shipment.

Storage Buffer:

PBS with 0.02% sodium azide and 50% glycerol pH 7.3.

Aliquoting is unnecessary for -20°C storage

For technical support and original validation data for this product please contact:

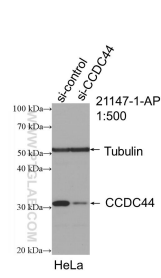
T: 4006900926

E: Proteintech-CN@ptglab.com

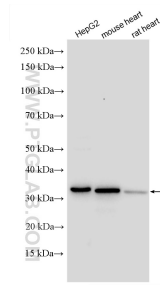
W: ptgcn.com

This product is exclusively available under Proteintech Group brand and is not available to purchase from any other manufacturer.

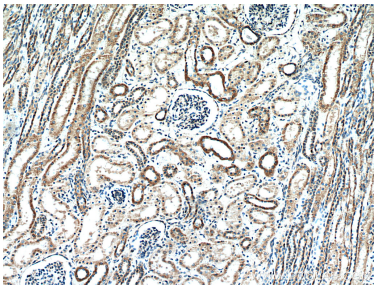
Selected Validation Data



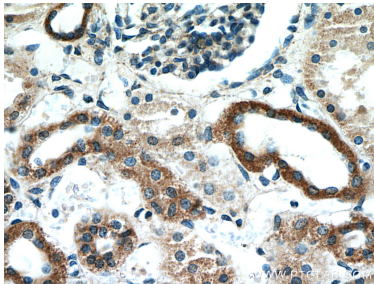
WB result of TACO1/CCDC44 antibody (21147-1-AP; 1:500; incubated at room temperature for 1.5 hours) with sh-Control and sh-TACO1/CCDC44 transfected HeLa cells.



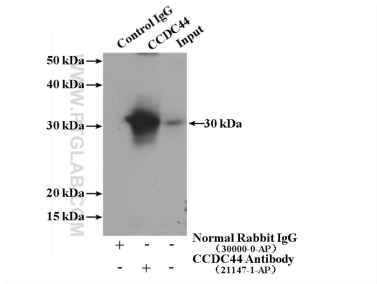
Various lysates were subjected to SDS PAGE followed by western blot with 21147-1-AP (TACO1/CCDC44 antibody) at dilution of 1:1000 incubated at room temperature for 1.5 hours.



Immunohistochemical analysis of paraffin-embedded human kidney using 21147-1-AP (TACO1/CCDC44 antibody) at dilution of 1:50 (under 10x lens).



Immunohistochemical analysis of paraffin-embedded human kidney using 21147-1-AP (TACO1/CCDC44 antibody) at dilution of 1:50 (under 40x lens).



IP result of anti-TACO1/CCDC44 (IP:21147-1-AP, 4ug; Detection:21147-1-AP 1:600) with mouse liver tissue lysate 4000ug.