

For Research Use Only

ITIH1 Polyclonal antibody

Catalog Number: 21141-1-AP



Basic Information

Catalog Number:

21141-1-AP

Concentration:

600 ug/ml

Source:

Rabbit

Isotype:

IgG

Immunogen Catalog Number:

AG15598

GenBank Accession Number:

BC069464

GeneID (NCBI):

3697

UNIPROT ID:

P19827

Full Name:

inter-alpha (globulin) inhibitor H1

Calculated MW:

911 aa, 101 kDa

Observed MW:

70-76 kDa

Purification Method:

Antigen affinity purification

Recommended Dilutions:

WB 1:500-1:2000

Applications

Tested Applications:

WB, ELISA

Species Specificity:

human, mouse, rat

Positive Controls:

WB : mouse auricular cartilage tissue, mouse cartilage tissue, rat auricular cartilage tissue

Background Information

ITIH1 (inter-alpha-trypsin inhibitor heavy chain 1), also named as IGHEP1 and SHAP. It is a key component of the inter-alpha-trypsin inhibitor (ITI) family, which plays a crucial role in extracellular matrix (ECM) stabilization and inflammation regulation. ITIH1 forms a complex with bikunin (a light chain) and other heavy chains (ITIH2, ITIH3, ITIH4), contributing to the stabilization of hyaluronan-rich matrices. The calculated molecular weight of the ITIH1 mature form is 101 kDa, but the actual observed molecular weight is about 76 kDa (PMID: 9677337).

Storage

Storage:

Store at -20°C. Stable for one year after shipment.

Storage Buffer:

PBS with 0.02% sodium azide and 50% glycerol, pH7.3

Aliquoting is unnecessary for -20°C storage

For technical support and original validation data for this product please contact:

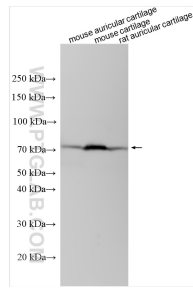
T: 4006900926

E: Proteintech-CN@ptglab.com

W: ptgcn.com

This product is exclusively available under Proteintech Group brand and is not available to purchase from any other manufacturer.

Selected Validation Data



Various lysates were subjected to SDS PAGE followed by western blot with 21141-1-AP (ITIH1 antibody) at dilution of 1:1000 incubated at room temperature for 1.5 hours.